



A one bedroom apartment set within a private development in Chorleywood  
Dog Kennel Lane, Chorleywood, WD3 5EL





**Asking Price: £1,475 pcm**

## **A one bedroom apartment set within a private development in Chorleywood**

Dog Kennel Lane, Chorleywood, WD3 5EL

---

• RURAL PRIVATE DEVELOPMENT • MODERNISED TO A HIGH STANDARD • ONE BEDROOM • BATHROOM • LIVING ROOM • KITCHEN WITH APPLIANCES • PRIVATE OUTSIDE SEATING AREA • ONE ALLOCATED PARKING SPACE ONLY • UNFURNISHED

---

### **Description**

Originally forming part of The Cedars Estate, The Stables is a period mews style development comprising of 3-4 apartments. This ground floor, one bedroom apartment has been modernised to an excellent standard. The apartment comprises of a modern kitchen with appliances, bathroom, living room and a double bedroom. The property benefits from an allocated parking for one vehicle and a private outside space.

**\*\*An advance reservation payment of one weeks rent is required to secure this property\*\***

### **Location**

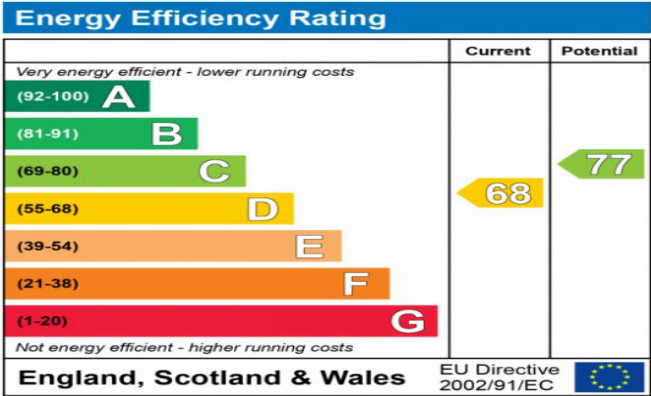
The area is also well served for sought after state and private schools for all ages which include St Clement Danes, Christchurch, Russell and Chorleywood Primary schools. Leisure facilities include golf courses, cricket, football clubs, horse riding and fitness centres. The 190 acre Chorleywood Common, together with the historic 250 acre Chorleywood House Estate is an area of outstanding natural beauty with wonderful walks and views over the River Chess. Also Rickmansworth Aquadrome, provides acres of outdoor space for walks and further activities. The Metropolitan and Main lines at Chorleywood Station offer a frequent service into London and beyond. The M25 is easily accessible via Junctions 17 and 18. London airports are also within easy reach.





### Additional Information

- Local Authority: Three Rivers District Council
- Council Tax Band: C
- Deposit Amount: £1,701.00
- Reservation Payment: One weeks rent
- Energy Efficiency Rating: Band D
- Available Date: 02/02/2026



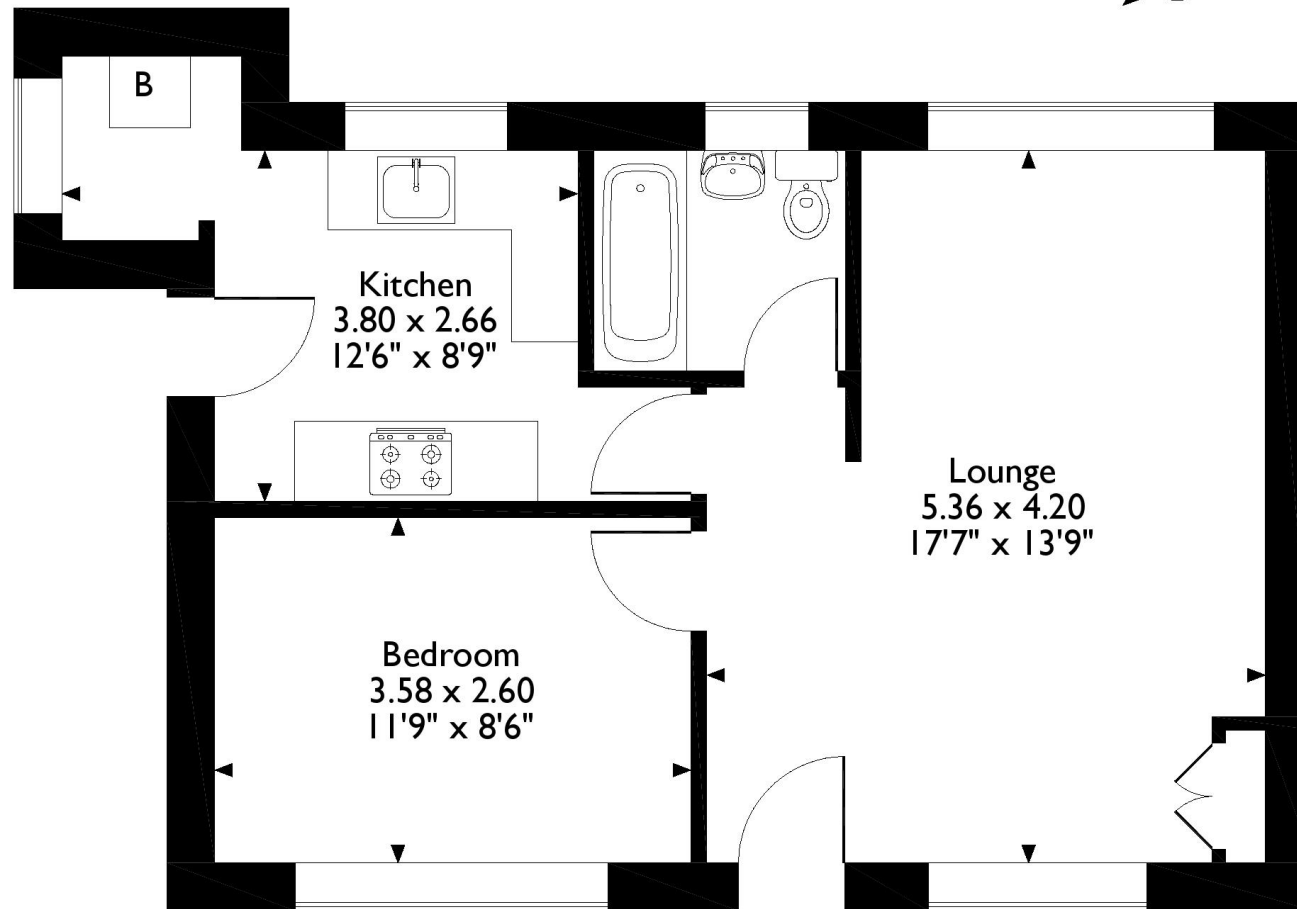
The energy efficiency rating is a measure of the overall efficiency of a home. The higher the rating the more energy efficient the home is and the lower the fuel bills will be.





# The Stables, Dog Kennel Lane Chorleywood, Rickmansworth

## Approximate Gross Internal Area 44 Sq M/474 Sq Ft



Please note that the location of doors, windows and other items are approximate and this floorplan is to be used for illustrative purposes only. Unauthorized reproduction is prohibited.

