



A two bedroom detached bungalow in a convenient location  
Rayners Lane, Pinner, HA5 5HT





**Asking Price: £1,900 pcm**

## **A two bedroom detached bungalow in a convenient location**

Rayners Lane,Pinner, HA5 5HT

---

• ENTRANCE HALL • LOUNGE WITH PATIO DOORS TO GARDEN • FITTED KITCHEN • TWO BEDROOMS • BATHROOM • REAR GARDEN • DRIVEWAY WITH OFF STREET PARKING • UNFURNISHED

---

### **Description**

A delightful two double bedroom, detached bungalow benefiting from newly fitted carpets and plumbing throughout, a new three-piece family bathroom, new radiators, and a new boiler. The property comprises a generous entrance hallway with a useful store/cloak cupboard. There are two front aspect bedrooms, a modern family bathroom and a well-equipped kitchen. Completing the property is a charming lounge/dining room with patio doors opening out to the garden, a feature fireplace and two character, stained-glass windows. Externally, the property boasts a good-sized rear garden that is part lawn and part patio, with established shrubs and tall trees providing a sense of privacy. To the front of the property there is a low-maintenance garden and a driveway providing off-street parking for two cars. \*\* An advance reservation payment of one weeks rent is required to secure the property \*\*

### **Location**

Situated conveniently close to Pinner, North Harrow and Rayners Lane high streets, which all offer a range of shopping facilities, restaurants, coffee houses and popular supermarkets. For commuters, there are excellent transport links nearby with the Metropolitan Line available at both Pinner and North Harrow stations, with Rayners Lane station providing the Metropolitan and Piccadilly Line services. The area is well served by primary and secondary schooling, children's parks/playgrounds and recreational facilities.

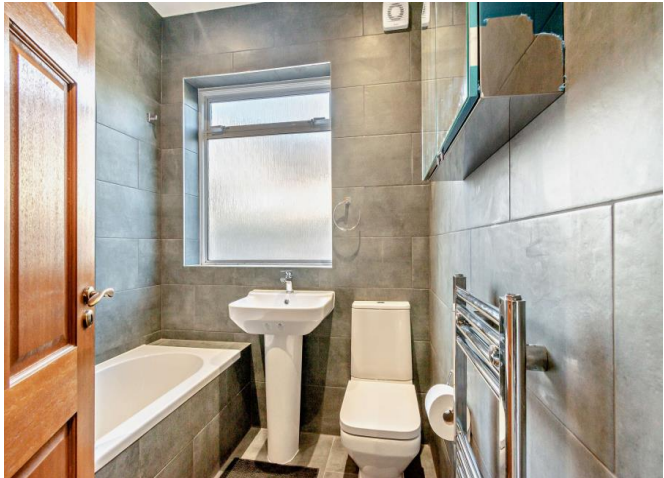
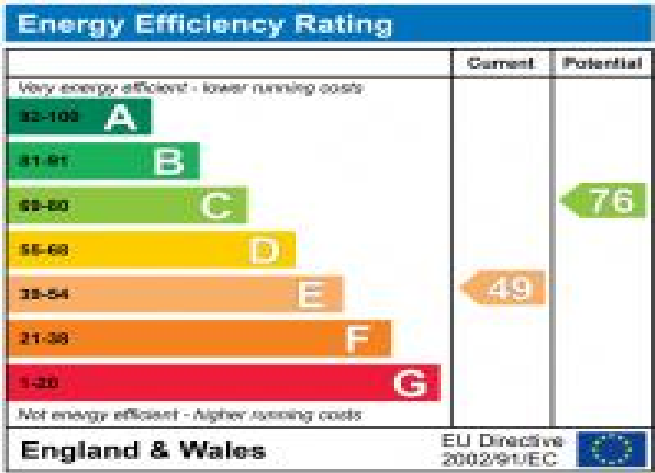






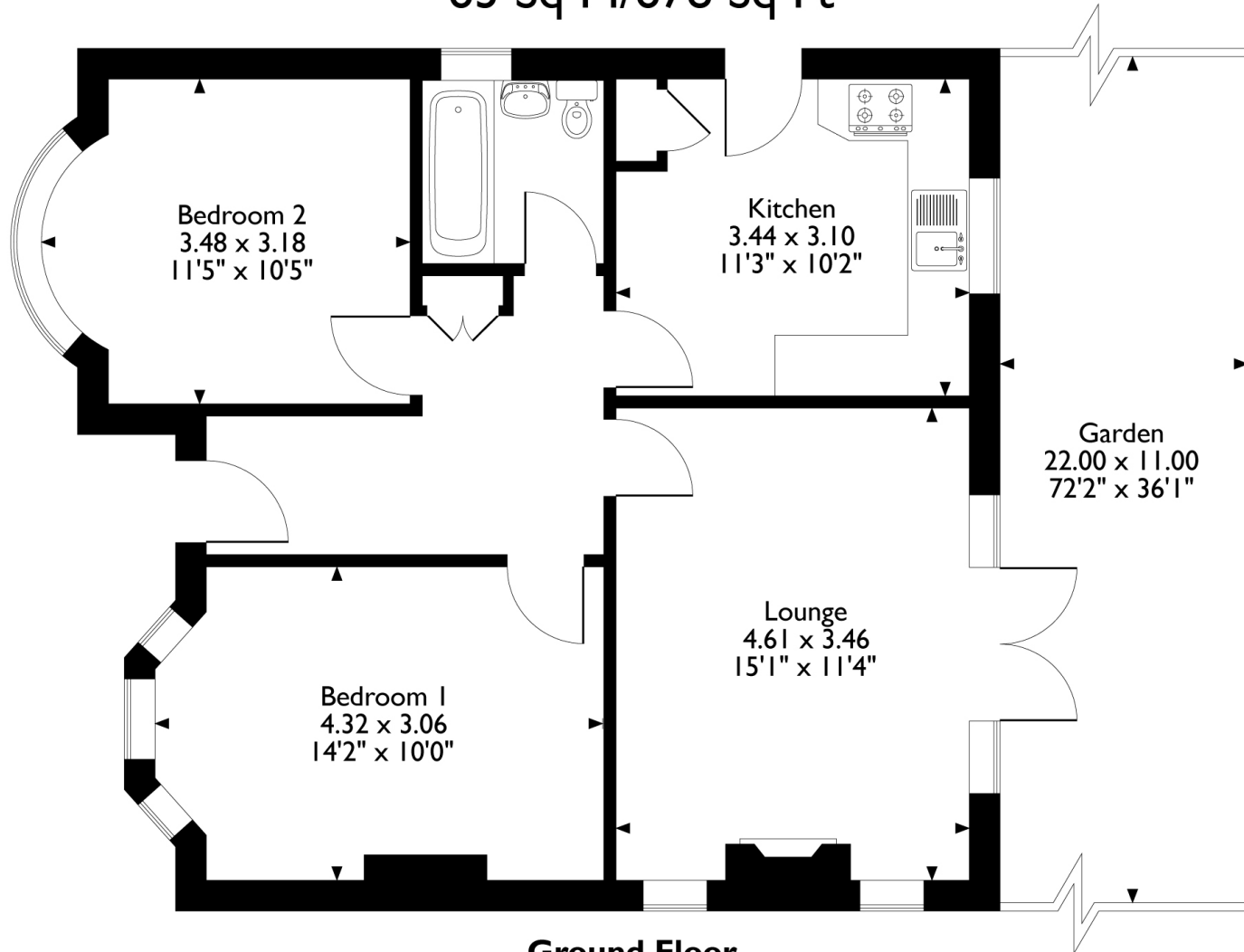
### Additional Information

- Local Authority: Harrow
- Council Tax Band: E
- Deposit Amount: £2,307.00
- Reservation Payment: One weeks rent
- Energy Efficiency Rating: Band E
- Available Date: 29/01/2026





Rayners Lane, Pinner  
Approximate Gross Internal Area  
63 Sq M/678 Sq Ft



**Ground Floor**

Please note that the location of doors, windows and other items are approximate and this floorplan is to be used for illustrative purposes only. Unauthorized reproduction is prohibited.

