



Websters
estate agents

Cole Park Road, Twickenham, TW1 1JA

First Floor 1 bedroom apartment in an attractive detached property with a Share of Freehold, driveway parking, use of communal gardens and secure entry phone access. Situated 0.5 miles from St Margarets village and train station and just 0.3 miles from Moormead Park with a walking/cycle track along the River Crane through Twickenham to Crane Park.

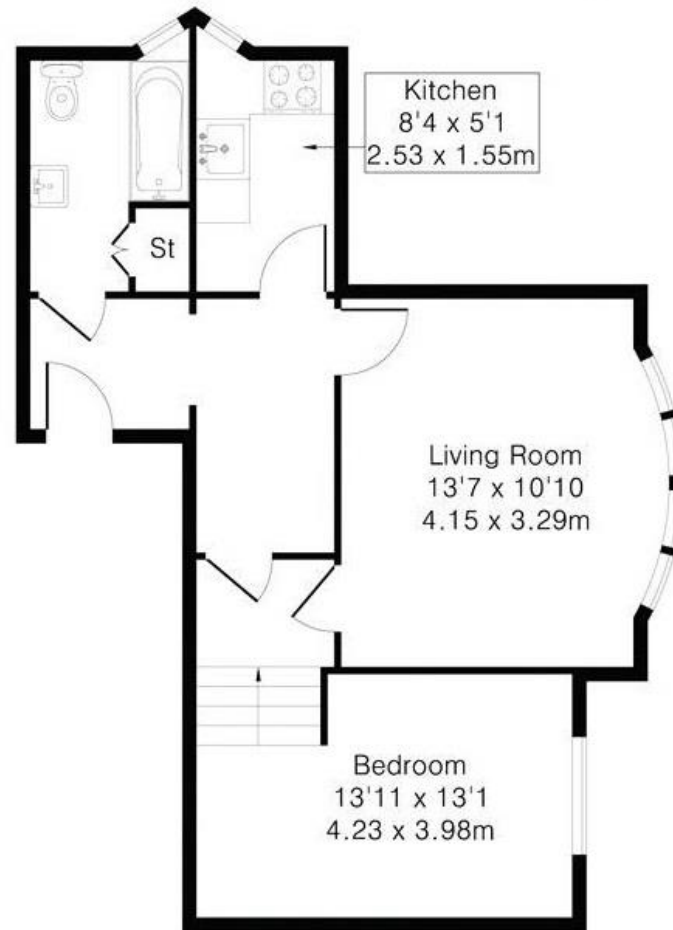
With no onward chain and tastefully presented to offer 488 sq ft of well balanced living space with modern fixtures, fittings and floorings, double glazed windows, high ceilings and neutral decor throughout.

The spacious entrance hallway has doors to the bay fronted living room, the separate fitted kitchen and the bathroom, a hatch to private loft storage and stairs leading down to the double bedroom. The garden at the rear is accessed at the side of the property and has a lawn, mature planting and a seating area.

Located less than 0.6 miles from Twickenham town centre and mainline station and just 0.2 miles from the A316 with direct access to the M3/M25 and central London
EPC Rating E

- First Floor 1 Double Bedroom Apartment
- Share of Freehold and No Chain
- Driveway Parking and Communal Gardens
- Living Room and Separate Kitchen
- Tastefully Presented Throughout
- 0.5 Miles from St Margarets Village
- 0.6 Miles from Twickenham Town Centre and Station





First Floor

Approximate Gross Internal Area 488 sq ft – 45 sq m

[a](#) Websters Estate Agents 36 Broad Street, Teddington, Middlesex TW11 8QY [t](#) 020 8614 6000 [e](#) sales@mywebsters.co.uk [w](http://mywebsters.co.uk) mywebsters.co.uk

Disclaimer

These particulars, whilst believed to be accurate are set out as a general outline only for guidance and do not constitute any part of an offer or contract. Intending purchasers should not rely on them as statements of representation of fact, but must satisfy themselves by inspection or otherwise as to their accuracy. We have not carried out a detailed survey nor tested the services, appliances and specific fittings. Room sizes should not be relied upon for carpets and furnishings. The measurements given are approximate. No person in this firm's employment has the authority to make or give any representation or warranty in respect of the property.

