



## STUART TOWER, W9 £525pw / £2,275pm FURNISHED OR UNFURNISHED

A well-presented tenth floor balcony flat with views over Maida Vale in this popular modern purpose built block, with three lifts and 24-hour security. Stuart Tower is situated within 0.5 miles of the Regents Canal, local shops, cafes in Clifton Road and the underground at Warwick Avenue (Bakerloo line). Access to the motorway network is within a few minutes reach as is Paddington main line station with the added advantage of the high speed link to London's Heathrow airport.

Two Bedrooms | Bathroom | Reception Room | Kitchen | Balcony | 24-Hour Porterage | Passenger Lift

[winkworth.co.uk/maida-vale](http://winkworth.co.uk/maida-vale)

**Winkworth**

incorporating

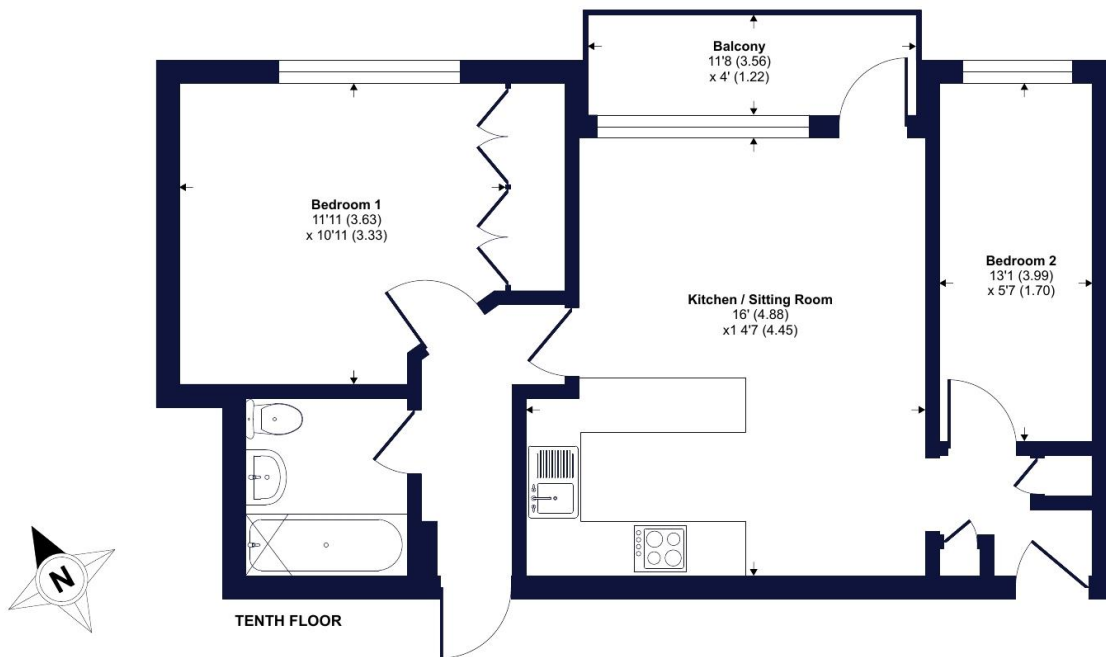
**Vickers**



## Maida Vale, London, W9

Approximate Area = 556 sq ft / 51.6 sq m

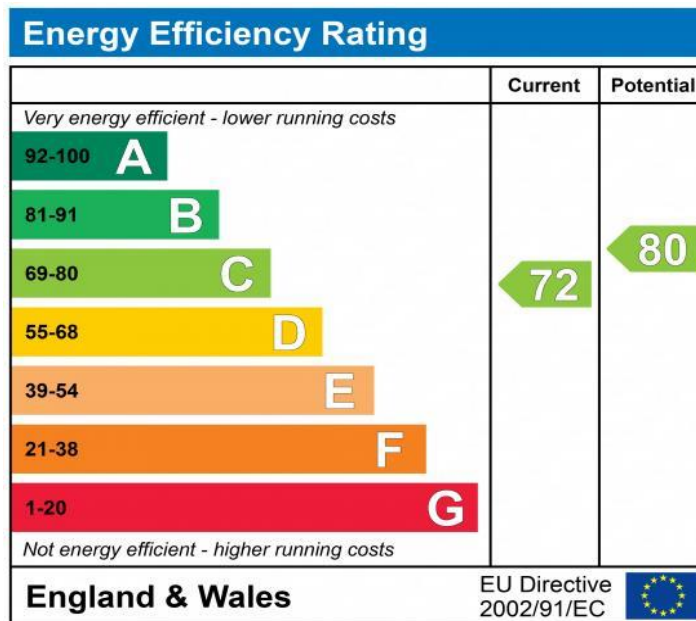
For identification only - Not to scale



**Certified  
Property  
Measurer**

This floor plan should be used as a general outline for guidance only. Any intending purchaser or lessee should satisfy themselves by inspection searches, enquiries, and full survey as to the correctness of each statement. Any areas, measurements or distances quoted are approximate and should not be used to value a property or be the basis of any sale or let. Floor plan produced in accordance with RICS Property Measurement Standards incorporating International Property Measurement Standards (IPMS2 Residential). © nichecom 2022. Produced for Winkworth. REF: 856090

**Winkworth**



NB: These particulars are not an offer or contract, nor part of one. You should not rely on statements by Winkworth in the particulars or by word of mouth or in writing "information" as being factually accurate about the property, its condition or its value. Neither Winkworth nor any joint agent has any authority to make any representations about the property, and accordingly any information given is entirely without responsibility on the part of the agents, seller(s) or lessor(s). These particulars are prepared on the basis of the information supplied by our client and are a rough guide for information only. The photographs show only certain parts of the property. We are not able to check all of the information and therefore are unable to guarantee accuracy. All interested parties are therefore advised to undertake all necessary inspections and checks that they deem appropriate. Where displayed, the square footage is taken from the floor plans, which are created by an independent supplier. These measurements are approximate and included for illustrative purposes only. The measurements may vary. Winkworth does not make any representation as to the accuracy of these measurements and you should seek to verify them for yourself. Winkworth accept no liability for any loss you may suffer if you rely on these measurements. All fixtures and fittings, whether fitted or not are deemed removable by the vendor unless stated. Any reference to alterations to, or use of, any part of the property does not mean that any necessary planning, building regulations or other consent has been obtained. Amenities and appliances have not been tested.

Maida Vale | 211-213 Sutherland Avenue, Little Venice, London W9 1RU  
020 7289 1692 | [maidavale@winkworth.co.uk](mailto:maidavale@winkworth.co.uk)

[winkworth.co.uk/maida-vale](http://winkworth.co.uk/maida-vale)



incorporating  
**Vickers**



Proprietors: FINEBASE W9 Limited trading as Winkworth  
Registered office: 103-104 St John's Wood Terrace, London NW8 6PL  
Registered in England No 12007773