



## ELGIN MANSIONS, W9 £775pw / £3,358pm PART FURNISHED

This bright and spacious top floor period mansion apartment on Elgin Avenue; benefits from a large principal bedroom, overlooking the communal gardens with an attractive en suite and access to a South-facing balcony. Elgin Mansions is one of the premier mansion blocks in Maida Vale with close proximity to Maida Vale station (Bakerloo line - 0.2 miles) and is adjacent to Paddington Recreational Ground.

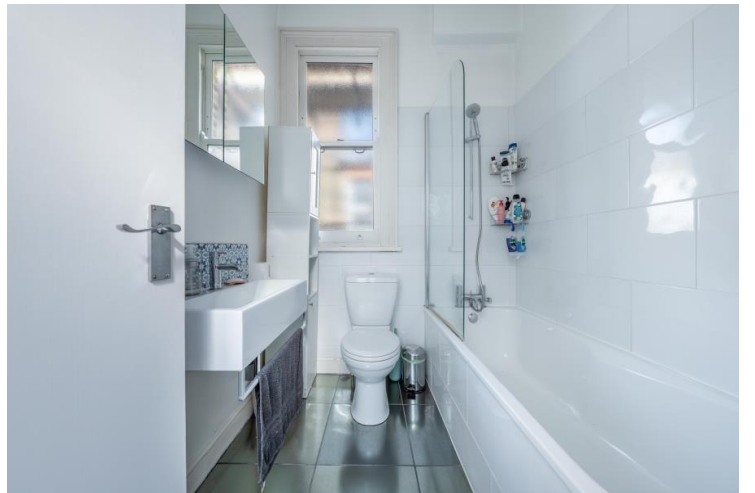
Principal Bedroom With En Suite Shower Room | Second Bedroom | Bathroom | Reception Room | Kitchen | South Facing Balcony | Communal Gardens

VIRTUAL TOUR: [https://youtu.be/IHBkIR\\_QXAM](https://youtu.be/IHBkIR_QXAM)  
[winkworth.co.uk/maida-vale](https://www.winkworth.co.uk/maida-vale)

**Winkworth**

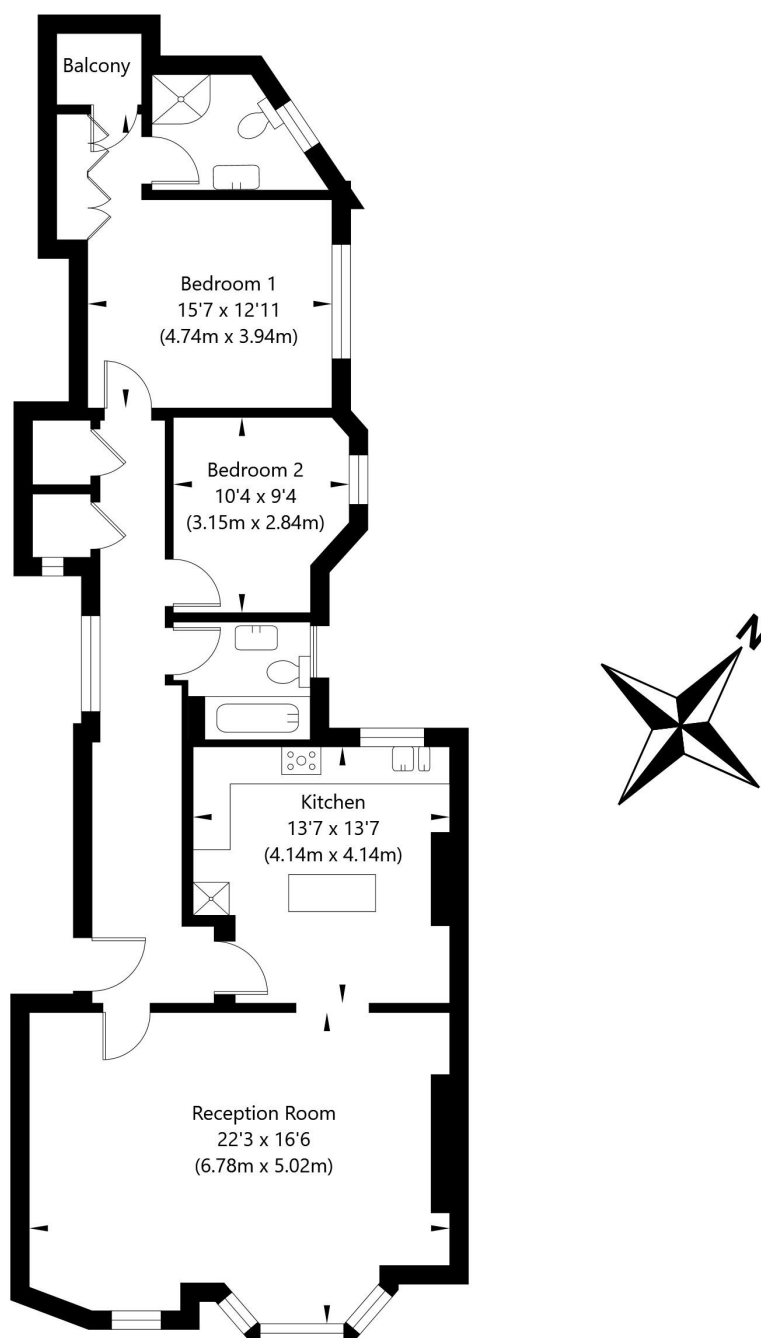
incorporating

**Vickers**

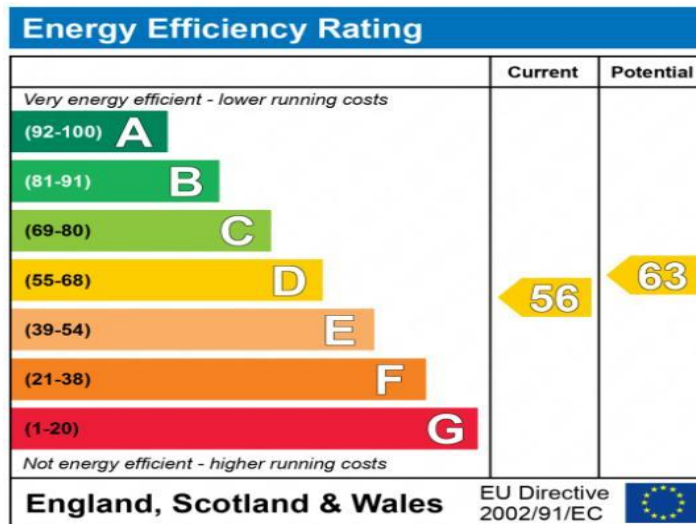


# Elgin Mansions, Elgin Avenue, Maida Vale, London, W9 1JG

Third Floor  
GROSS INTERNAL FLOOR AREA  
APPROX. 100.61 SQ M / 1083 SQ FT



APPROXIMATE GROSS INTERNAL FLOOR AREA 100.61 SQ M / 1083 SQ FT  
THIS FLOOR PLAN IS FOR ILLUSTRATIVE PURPOSES ONLY AND  
SHOULD BE USED FOR THIS PURPOSE BY PROSPECTIVE APPLICANTS AS ITS NOT TO SCALE.



The energy efficiency rating is a measure of the overall efficiency of a home. The higher the rating the more energy efficient the home is and the lower the fuel bills will be.

NB: These particulars are not an offer or contract, nor part of one. You should not rely on statements by Winkworth in the particulars or by word of mouth or in writing "information" as being factually accurate about the property, its condition or its value. Neither Winkworth nor any joint agent has any authority to make any representations about the property, and accordingly any information given is entirely without responsibility on the part of the agents, seller(s) or lessor(s). These particulars are prepared on the basis of the information supplied by our client and are a rough guide for information only. The photographs show only certain parts of the property. We are not able to check all of the information and therefore are unable to guarantee accuracy. All interested parties are therefore advised to undertake all necessary inspections and checks that they deem appropriate. Where displayed, the square footage is taken from the floor plans, which are created by an independent supplier. These measurements are approximate and included for illustrative purposes only. The measurements may vary. Winkworth does not make any representation as to the accuracy of these measurements and you should seek to verify them for yourself. Winkworth accept no liability for any loss you may suffer if you rely on these measurements. All fixtures and fittings, whether fitted or not are deemed removable by the vendor unless stated. Any reference to alterations to, or use of, any part of the property does not mean that any necessary planning, building regulations or other consent has been obtained. Amenities and appliances have not been tested.

Maida Vale | 211-213 Sutherland Avenue, Little Venice, London W9 1RU  
020 7289 1692 | [maidavale@winkworth.co.uk](mailto:maidavale@winkworth.co.uk)

[winkworth.co.uk/maida-vale](http://winkworth.co.uk/maida-vale)



incorporating  
**Vickers**



Proprietors: FINEBASE W9 Limited trading as Winkworth  
Registered office: 103-104 St John's Wood Terrace, London NW8 6PL  
Registered in England No 12007773