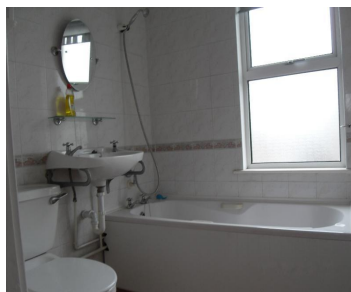
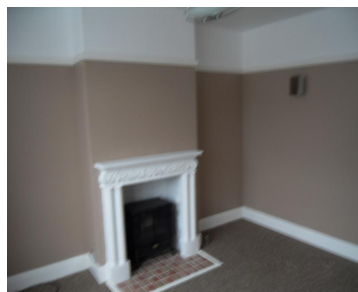


Oxford Crescent, Clacton-on-Sea, Essex, CO15 3PY



LET AGREED. SIMILAR PROPERTIES REQUIRED FOR WAITING APPLICANTS

The Letting Link offers this Semi Detached House

- \* Three/Four Bedrooms \* Lounge \* Kitchen \* Bathroom \* Gas Central Heating
- \* Fully Double Glazed \* Conservatory \* Garage \* Walking Distance of Town Centre
- \* Employed Persons Preferred \* Pets by Negotiation
- \* Deposit £800.00

Rent :£800 p.c.m.

Available From: 07/02/2013



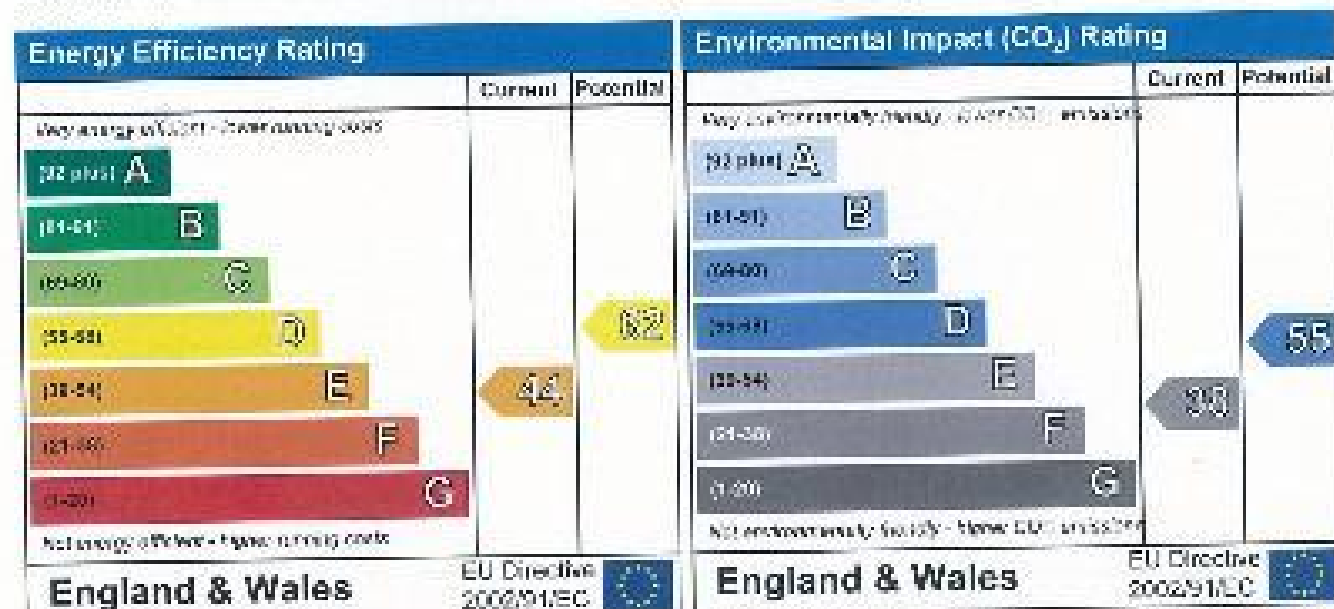
Misrepresentation Act 1967  
These particulars are believed to be correct but their accuracy is not guaranteed nor do they form part of any contract.

# Energy Performance Certificate

21, Oxford Crescent  
CLAGTON-ON-SEA  
CU15 3PY

Dwelling type: Semi-detached house  
Date of assessment: 30 March 2010  
Date of certificate: 30 March 2010  
Reference number: 8260-6427-7020-3450-0872  
Type of assessment: RdSAP, existing dwelling  
Total floor area: 87 m<sup>2</sup>

This home's performance is rated in terms of the energy use per square metre of floor area, energy efficiency based on fuel costs and environmental impact based on carbon dioxide (CO<sub>2</sub>) emissions.



The energy efficiency rating is a measure of the overall efficiency of a home. The higher the rating the more energy efficient the home is and the lower the fuel bills are likely to be.

The environmental impact rating is a measure of a home's impact on the environment in terms of carbon dioxide (CO<sub>2</sub>) emissions. The higher the rating the less impact it has on the environment.

## Estimated energy use, carbon dioxide (CO<sub>2</sub>) emissions and fuel costs of this home

	Current	Potential
Energy use	457 kWh/m <sup>2</sup> per year	30.1 kWh/m <sup>2</sup> per year
Carbon dioxide emissions	6.7 tonnes per year	4.4 tonnes per year
Lighting	£84 per year	£50 per year
Heating	£816 per year	£674 per year
Hot water	£221 per year	£120 per year

The figures in the table above have been provided to enable prospective buyers and tenants to compare the fuel costs and carbon emissions of one home with another. To enable this comparison the figures have been calculated using standardised running conditions (heating periods, room temperatures, etc.) that are the same for all homes; consequently they are unlikely to match an occupier's actual fuel bills and carbon emissions. In practice, the figures do not include the impacts of the fuels used for cooking or running appliances, such as TV, fridge etc.; nor do they reflect the costs associated with service, maintenance or safety inspections. Always check the certificate date because fuel prices can change over time and energy saving recommendations will evolve.

To see how this home can achieve its potential rating please see the recommended measures.



Remember to look for the Energy Saving Trust Recommended logo when buying energy-efficient products. It's a quick and easy way to identify the most energy-efficient products on the market.

This EPC and recommendations report may be given to the Energy Saving Trust to provide you with information on improving your dwelling's energy performance.