



A two bedroom apartment in a sought after development
Elm Park Court, Pinner, HA5 3LJ

ROBSONS

Asking Price: £1,650 pcm

A two bedroom apartment in a sought after development

Elm Park Court, Pinner, HA5 3LJ

• ENTRANCE HALL • LIVING ROOM WITH ACCESS TO BALCONY • KITCHEN • TWO BEDROOMS • COMMUNAL GROUNDS • RESIDENTS PARKING • FURNISHED

Description

An extremely rare opportunity to occupy this stunning two bedroom apartment ideally positioned in the heart of Pinner within the prestigious Elm Park Court development. This apartment comprises spacious living room, contemporary fitted kitchen, two double bedrooms and bathroom.

**** An advance reservation payment of one weeks rent is required to secure the property ****

Location

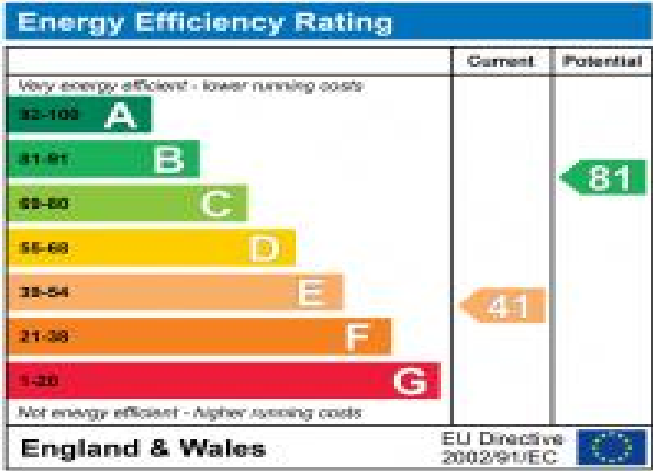
Elm Park Court is perfectly positioned in the heart of Pinner with all the wonderful amenities it has to offer. Ample shops, restaurants, beautiful parks, coveted schooling and excellent transport links such as the Metropolitan Line tube station just moments away.



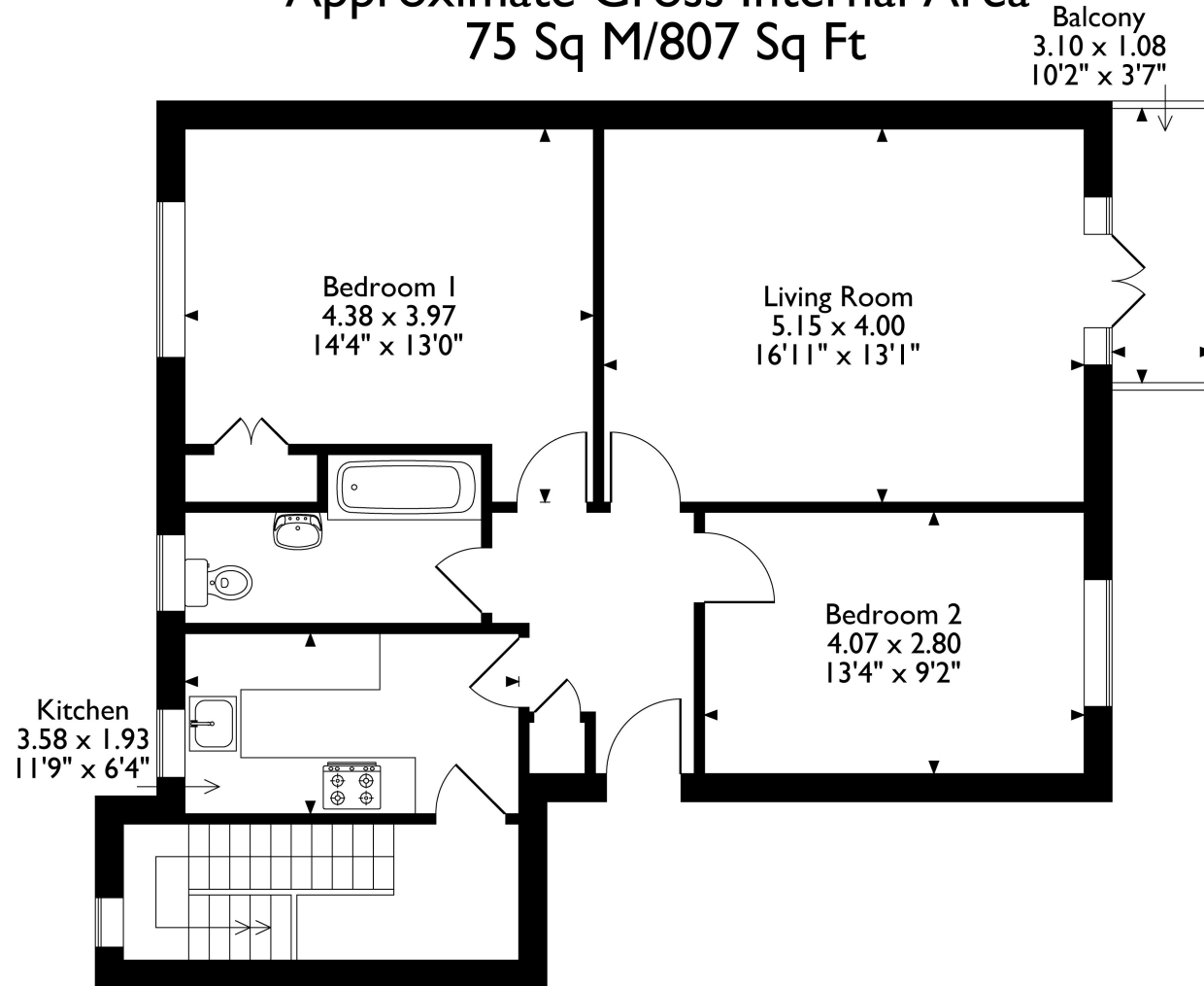


Additional Information

- Local Authority: Harrow
- Council Tax Band: C
- Deposit Amount: £1,903.00
- Reservation Payment: One weeks rent
- Energy Efficiency Rating: Band E
- Available Date: 30/01/2026



Elm Park Court, Flat Elm Park Road, Pinner
Approximate Gross Internal Area
75 Sq M/807 Sq Ft



Second Floor Flat

Please note the floorplan is for layout guidance only and is not drawn to scale unless stated. Windows and door openings are approximate. Whilst every care is taken in the preparation of this plan, please check all dimensions, square footages and shapes before making any decisions reliant upon them.

