



A two bedroom first floor maisonette with a large private garden  
Tolcarne Drive, Pinner, HA5 2DR

**ROBSONS**



**Asking Price: £1,700 pcm**

## **A two bedroom first floor maisonette with a large private garden**

Tolcarne Drive, Pinner, HA5 2DR

---

• STAIRS TO FIRST FLOOR • ENTRANCE HALL • LIVING ROOM • TWO BEDROOMS • KITCHEN • BATHROOM • LARGE REAR GARDEN • PERMIT PARKING AVAILABLE • GARAGE IN A NEARBY BLOCK • UNFURNISHED

---

### **Description**

This well-maintained first-floor maisonette is offered in great condition throughout and provides a comfortable and stylish living space. Upon entry, stairs lead you to the first floor where you'll find a bright and spacious living room, complete with a charming feature fireplace, a fitted kitchen, two good sized bedrooms and a modern family bathroom. To the rear there is a large private garden, providing the perfect outdoor space for relaxing or entertaining. There is on-street permit parking available and a garage in a nearby block.

**\*\* An advance reservation payment of one weeks rent is required to secure the property \*\***

### **Location**

Tolcarne Drive is situated on a popular road located just moments from both Pinner and Northwood Hills amenities, which offer a variety of shops, restaurants, coffee houses and popular supermarkets. Transport facilities include local bus links and the Metropolitan Line at both Pinner and Northwood Hills tube stations, which provide a fast and frequent service into the heart of Central London and beyond. The area is well served for primary and secondary schooling which includes nearby Harlyn primary school and Northwood and Haydon secondary schools. There is also a good selection of children's parks/playgrounds and recreational facilities

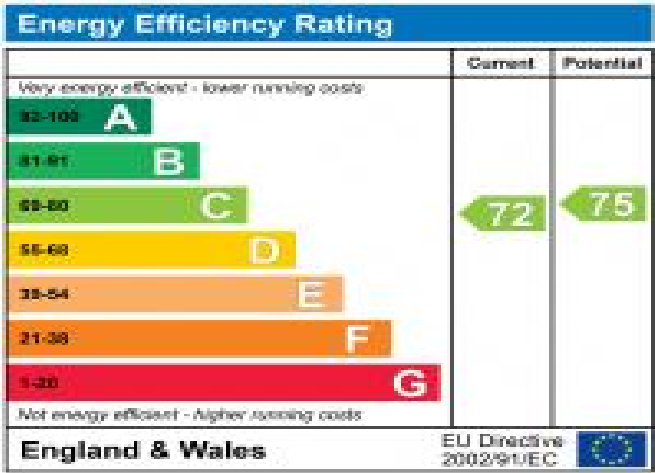




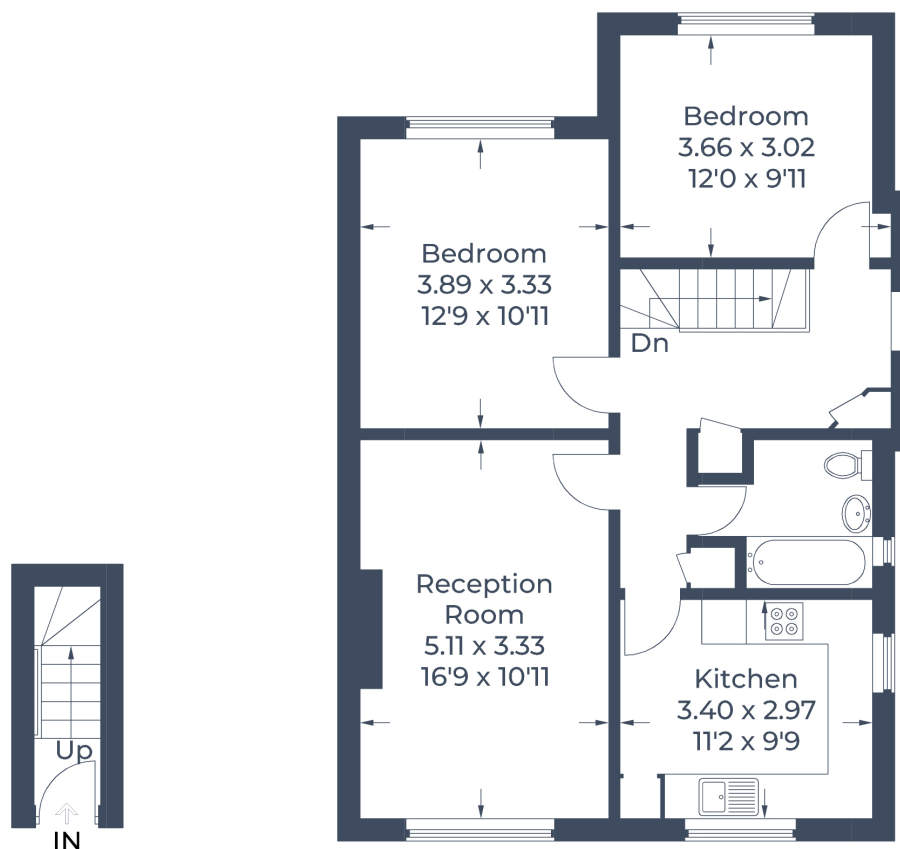


Additional Information

- Local Authority: Harrow
- Council Tax Band: D
- Deposit Amount: £1,961.00
- Reservation Payment: One weeks rent
- Energy Efficiency Rating: Band C
- Available Date: 06/02/2026



Approximate Gross Internal Area  
 Ground Floor = 2.8 sq m / 30 sq ft  
 First Floor = 68.6 sq m / 738 sq ft  
 Total = 71.4 sq m / 768 sq ft



**Ground Floor    First Floor**

Illustration for identification purposes only,  
 measurements are approximate, not to scale.  
 © CJ Property Marketing Produced for Robsons

