



WARRINGTON CRESCENT, W9 £1,200pw / £5,200pm FURNISHED OR UNFURNISHED

A rarely available three bedroom garden and ground floor maisonette forming part of a red brick converted period house located in the heart of Little Venice, with a large shared patio leading onto the sought-after Crescent communal garden. The property comprises of three double bedrooms, two bathrooms, a guest WC, a large reception room with high ceilings and wood flooring throughout. Warrington Crescent is ideally situated for the shops and cafes on Clifton Road (0.3 miles), the Regent's Canal (0.4 miles) and Warwick Avenue underground station (Bakerloo line - 0.2 miles).

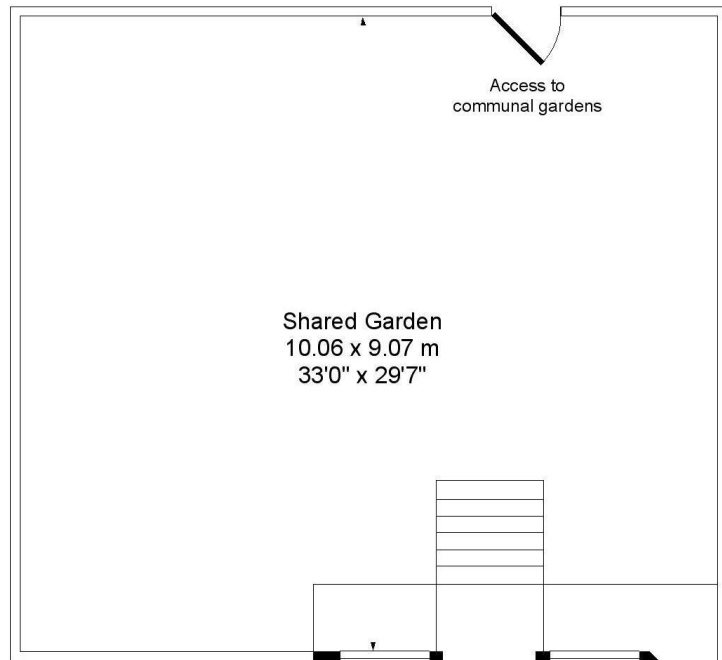
Three Bedrooms | Bathroom | Shower Room | Guest WC | Reception Room | Kitchen
| Shared Patio | Communal Gardens

winkworth.co.uk/maida-vale

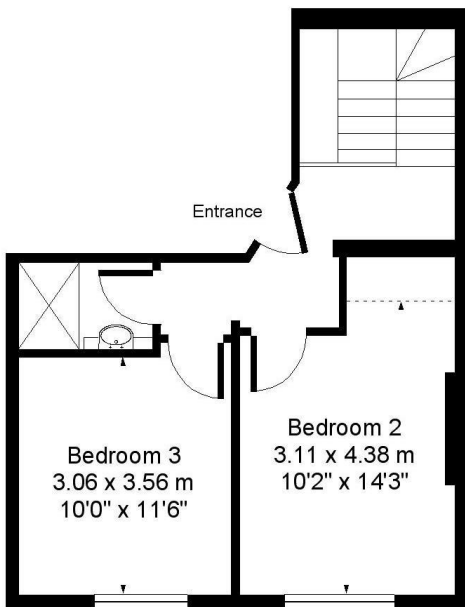
Winkworth

incorporating
Vickers

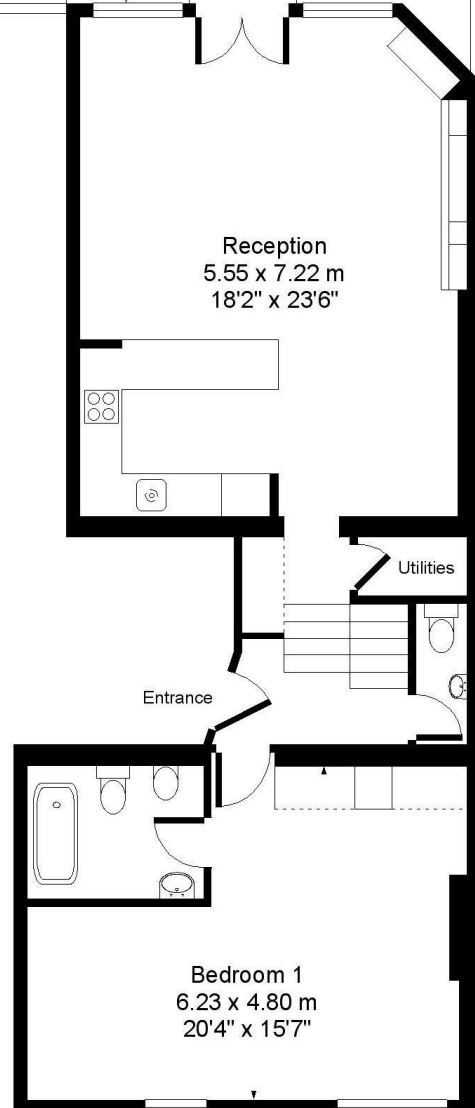




Shared Garden
10.06 x 9.07 m
33'0" x 29'7"

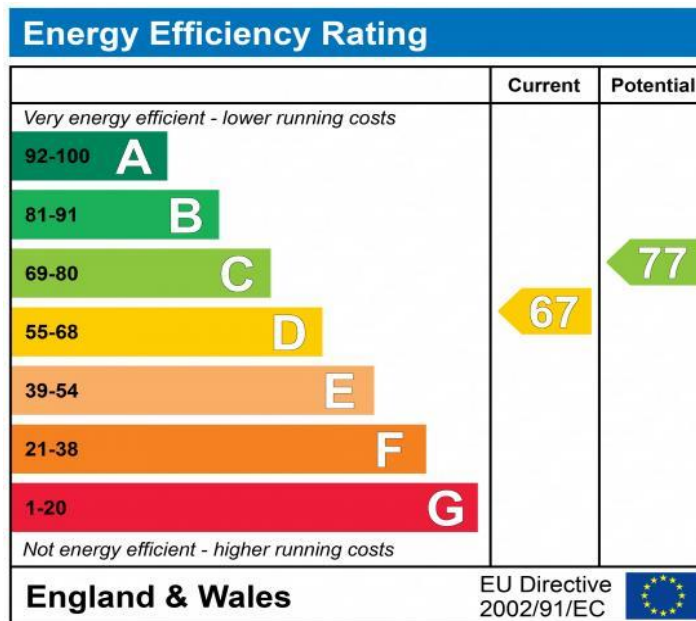


**RAISED
GROUND FLOOR**



**LOWER
GROUND FLOOR**

Approx. Gross Floor Area = 121 sq.meters • 1302 sq.feet



NB: These particulars are not an offer or contract, nor part of one. You should not rely on statements by Winkworth in the particulars or by word of mouth or in writing "information" as being factually accurate about the property, its condition or its value. Neither Winkworth nor any joint agent has any authority to make any representations about the property, and accordingly any information given is entirely without responsibility on the part of the agents, seller(s) or lessor(s). These particulars are prepared on the basis of the information supplied by our client and are a rough guide for information only. The photographs show only certain parts of the property. We are not able to check all of the information and therefore are unable to guarantee accuracy. All interested parties are therefore advised to undertake all necessary inspections and checks that they deem appropriate. Where displayed, the square footage is taken from the floor plans, which are created by an independent supplier. These measurements are approximate and included for illustrative purposes only. The measurements may vary. Winkworth does not make any representation as to the accuracy of these measurements and you should seek to verify them for yourself. Winkworth accept no liability for any loss you may suffer if you rely on these measurements. All fixtures and fittings, whether fitted or not are deemed removable by the vendor unless stated. Any reference to alterations to, or use of, any part of the property does not mean that any necessary planning, building regulations or other consent has been obtained. Amenities and appliances have not been tested.

Maida Vale | 211-213 Sutherland Avenue, Little Venice, London W9 1RU
020 7289 1692 | maidavale@winkworth.co.uk

winkworth.co.uk/maida-vale



incorporating
Vickers



Proprietors: FINEBASE W9 Limited trading as Winkworth
Registered office: 103-104 St John's Wood Terrace, London NW8 6PL
Registered in England No 12007773