



✓ PROFESSIONALLY
MANAGED

High Street, Uxbridge UB8 1JL

Guide price £1,295 per month

Available 30/01/2021: Furnished





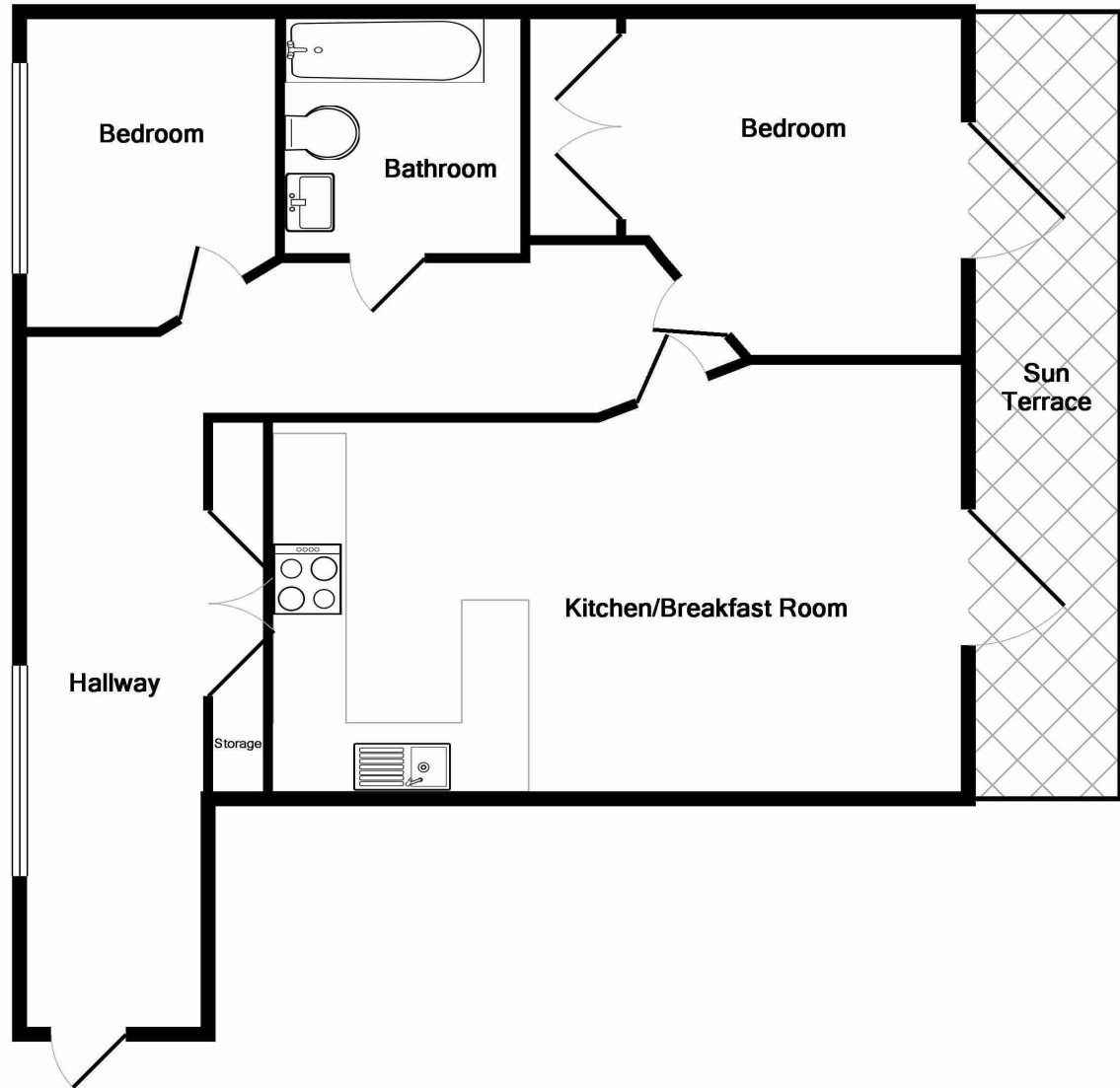
Guide Price: £1,295 per month

High Street Uxbridge UB8 1JL

- Town centre location
 - Two double bedrooms
 - Private terrace garden
 - Modern fitted kitchen
 - Contemporary bathroom suite
 - Ground floor
 - Security entry phone
 - Allocated permit parking
 - VIDEO VIEWING AVAILABLE
 - EPC rating- C
-

Offering the ultimate in executive lifestyle is this two bedroom ground floor apartment, With its central position in the heart of Uxbridge. The accommodation briefly comprises an entrance hallway leading to a large open plan living room with a fully fitted kitchen and French doors leading to the private garden. There is a double bedroom, a single bedroom with fitted wardrobes and a contemporary bathroom suite. The property also benefits from x1 allocated parking space within the gated development. Riverbank Point is situated on Uxbridge high street, offering direct access to Uxbridge underground station (Metropolitan & Piccadilly Line) , bars/restaurants and shopping facilities. Further Details Local authority: London Borough of Hillingdon Council Tax: £1,297.91 per year (Band C)

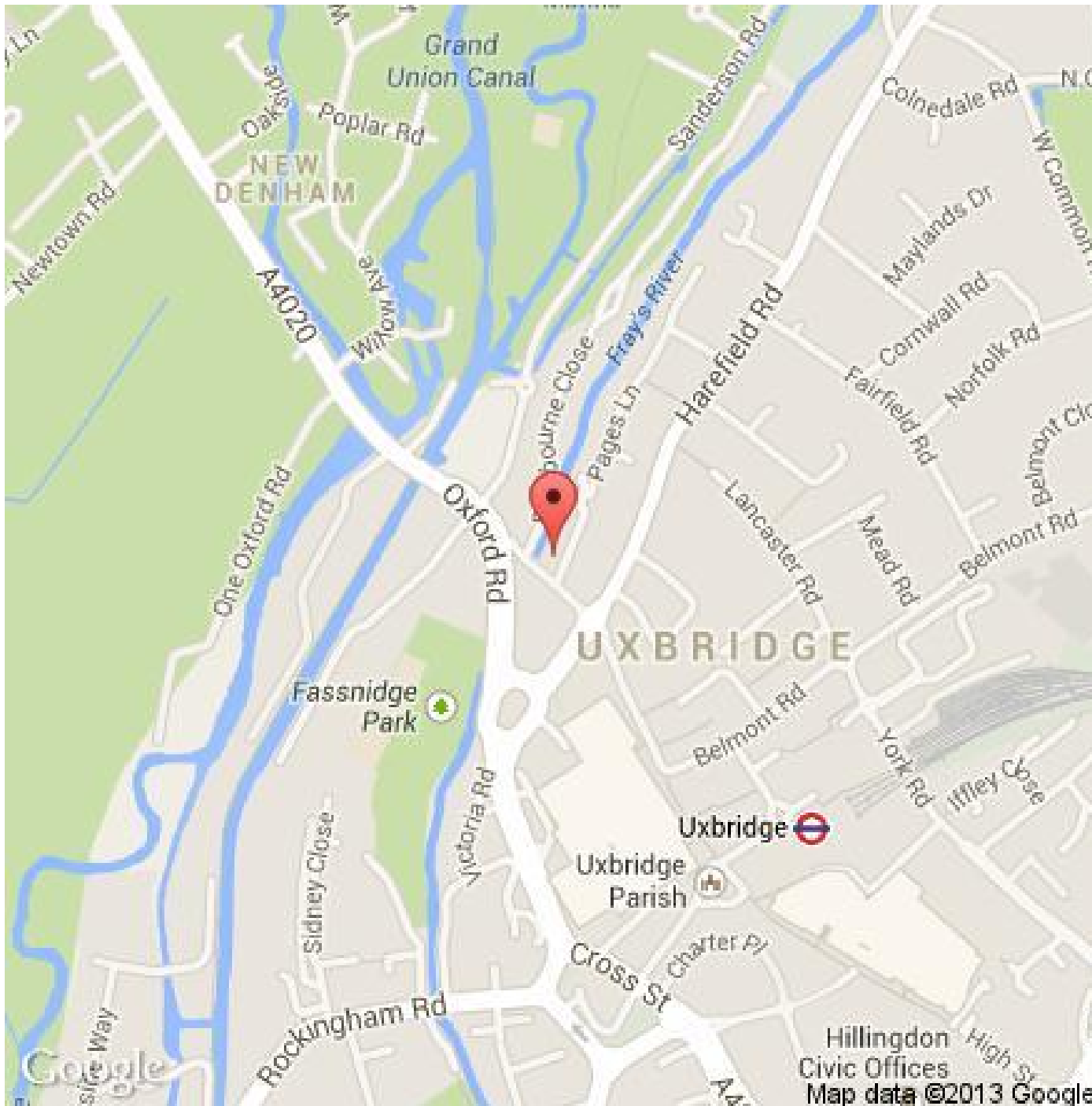




TOTAL APPROX. FLOOR AREA 856 SQ.FT. (79.5 SQ.M.)

Whilst every attempt has been made to ensure the accuracy of the floor plan contained here, measurements of doors, windows, rooms and any other items are approximate and no responsibility is taken for any error, omission, or mis-statement. This plan is for illustrative purposes only and should be used as such by any prospective purchaser. The services, systems and appliances shown have not been tested and no guarantee as to their operability or efficiency can be given

Made with Metropix ©2015



Uxbridge Lettings

268 High Street
Uxbridge
London
UB8 1LQ
T: 01895 252542

uxbridgilettings@gibbs-gillespie.co.uk

gibbs-gillespie.co.uk

Important Notice

We have prepared these property particulars as a general guide to a broad description of the property, they are not intended to constitute part of an offer or contract. We have not carried out a structural survey and the services, appliances and specific fittings have not been tested. All photographs, measurements, floorplans and distances referred to are given as a guide only and should not be relied upon for the purchase of carpets or any other fixtures and fittings. Lease details, service charges and ground rent (where applicable) and council tax are given as a guide only and should be checked and confirmed by your Solicitor prior to exchange of contracts. The copyright of all details, photographs and floorplans remain exclusive to Gibbs Gillespie.