

HILL STREET, MAYFAIR, W1J





Key Features

- Beautiful studio apartment
- Bright, spacious reception area with a large double bed
- Access to private communal garden
- Pet friendly, 24-hour emergency maintenance helpline
- Close to local amenities within Mayfair

Description

A beautiful studio apartment situated on the 8th floor of a stunning Art Deco style building in Mayfair. It comprises a bright, spacious reception area providing plenty of light and a large double bed. There is also a stunning kitchenette and modern bathroom adjacent to the living room and the apartment is available furnished or unfurnished. The building benefits from a lift, an onsite maintenance manager and a 24-hour helpline for emergencies. It is also pet friendly with direct access to the private communal gardens.

Situation

It is located within the prominent area of Mayfair, near the renowned Dorchester Hotel and only a stone's throw from the green spaces of Hyde Park. Surrounded by numerous high-end shops, restaurants and auction houses, it is the perfect place to explore the many attractions central London has to offer. It is a short walk from Green Park (Piccadilly, Jubilee and Victoria lines), Bond Street (Jubilee, Central and Elizabeth lines) and Marble Arch (Central line) stations in addition to the extensive bus routes available.

**HILL STREET, MAYFAIR,
W1J**

Terms

Price: £600.00 per week

Furnished/Unfurnished: Furnished or Unfurnished

Local Authority/Council Tax: Westminster Band E £1,114.73

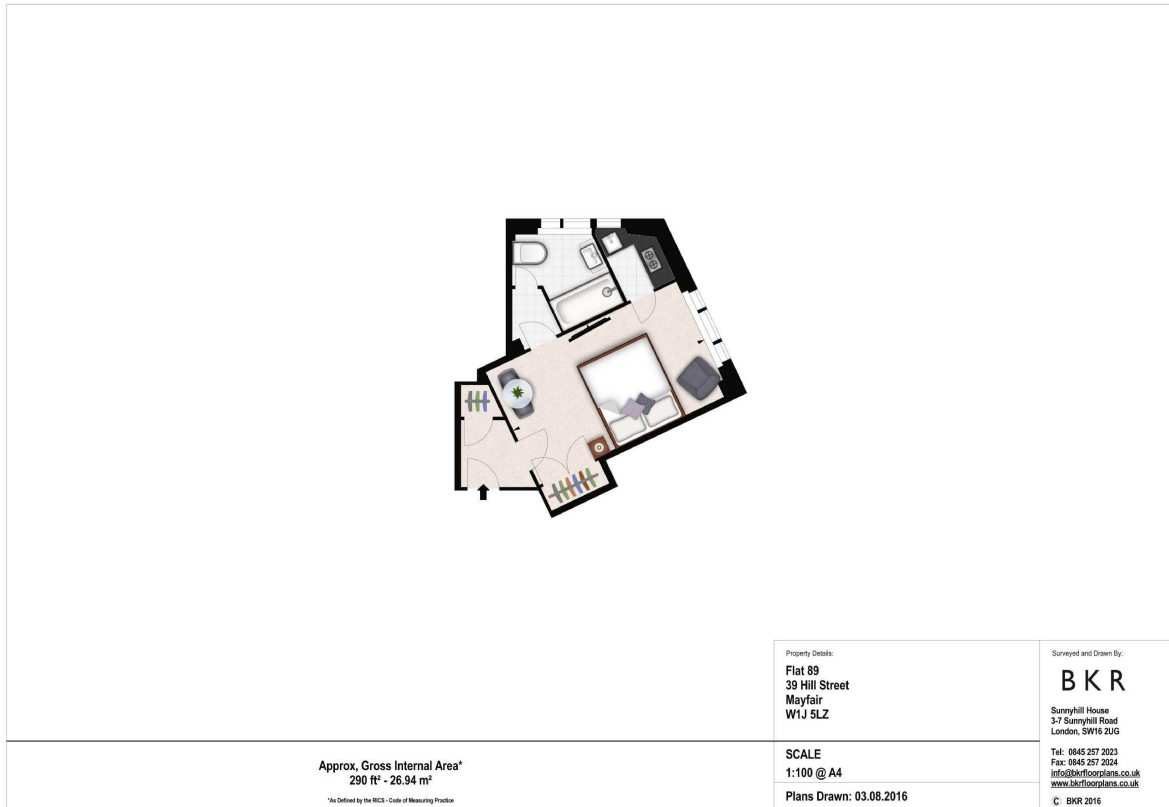
Viewing To view call 020 7043 8431

Parking Residents Parking

Fees: M2 Property do not charge tenant administration fees.

We are members of The Property Ombudsman Redress Scheme for Residential Sales and Lettings (Membership No. D00776) and Client Money Protect (Membership No. CMP003231).

Energy Efficiency Rating		Current	Potential
Very energy efficient - lower running costs			
92-100	A		
81-91	B		
69-80	C		76
55-68	D		
39-54	E	50	
21-38	F		
1-20	G		
Not energy efficient - higher running costs			
England & Wales		EU Directive 2002/91/EC	



M2property

M2 Property | 6 Roland Gardens | South Kensington | London SW7 3PH T 020 7043 8432 E info@m2property.com www.m2property.com

We have prepared these property particulars for the general guidance of intending purchasers or lessees. They are not designed to constitute a part of an offer or contract. For the purpose of the Property Misdescriptions Act 1991 and subsequent amendments we have taken all reasonable steps to ensure the accuracy of the details contained herein, however such statements are not to be relied on as a representation of fact and do not constitute any warranty or representation by M2 Property or the Vendors or Lessors. All photographs, measurements, floor plans and distances are given as a guide and should be checked before purchasing furniture, carpets, fixtures or fittings. Intending Purchasers or Lessees should satisfy themselves as to the accuracy of each of the statements contained in these particulars and should rely solely upon their own judgement, inspection and enquiries before entering into any contract. The floor plan if shown is intended as a guide to layout only and must not be relied on for any other purpose. It is not to scale. The copyright of all details, photographs and floor plans contained in these property particulars remain exclusive to M2 Property.