



A Two Double Bedroom Maisonette In The Heart Of Pinner
West End Avenue ,Pinner , HA5 1BP



Asking Price: £1,850 pcm

A Two Double Bedroom Maisonette In The Heart Of Pinner

West End Avenue ,Pinner , HA5 1BP

• PRIVATE GARDEN • TWO DOUBLE BEDROOMS • FAMILY BATHROOM • LIVING ROOM • KITCHEN WITH FITTED APPLIANCES • ON STREET PARKING • UNFURNISHED

Description

Robsons are excited to bring to the market this two bedroom first floor maisonette set in the heart of Pinner. The property comprises of an entrance hall and landing, two impressive double bedrooms, a stylish and modern family bathroom with stand-alone shower and separate bath tub, a spacious living room with an attractive feature fireplace, a large kitchen fitted with brand new modern appliances leading onto the private rear garden.

**** An advance reservation payment of one weeks rent is required to secure the property ****

Location

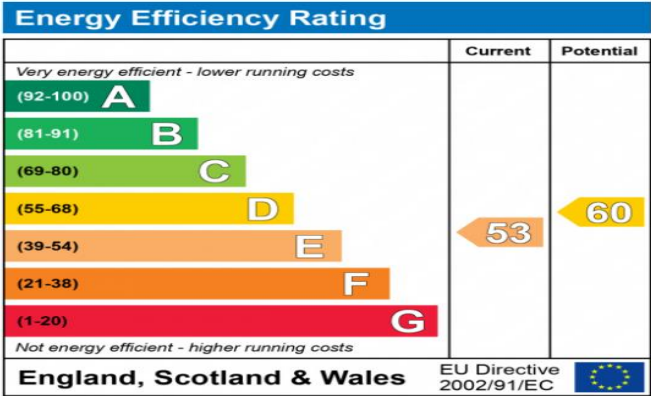
Situated on a popular residential road and within walking distance of Pinner which offers a variety of shops, restaurants, coffee houses and popular supermarkets. This property is in an ideal location close to local schools such as West Lodge Primary School. Transport facilities include local bus links and the Metropolitan Line at Pinner tube station, providing a fast and frequent service into the heart of Central London and beyond.





Additional Information

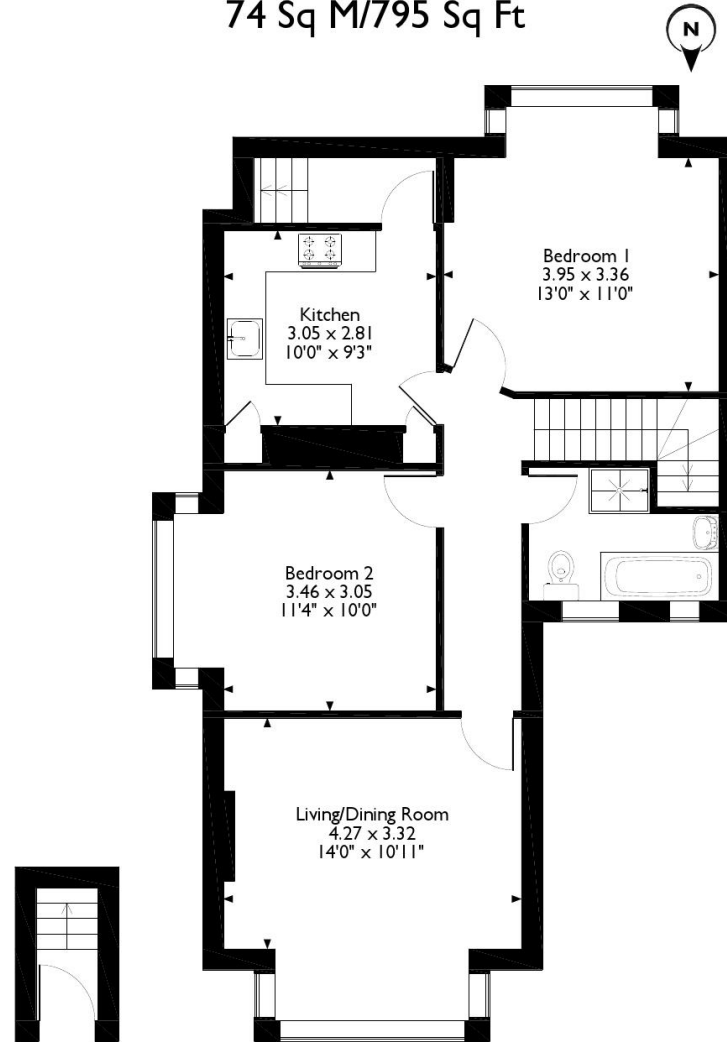
- Local Authority: London Borough of Harrow
- Council Tax Band: D
- Deposit Amount: £2,134.00
- Reservation Payment: One weeks rent
- Energy Efficiency Rating: Band E
- Available Date: 06/03/2026



The energy efficiency rating is a measure of the overall efficiency of a home. The higher the rating the more energy efficient the home is and the lower the fuel bills will be.



West End Court West End Avenue, Pinner
Approximate Gross Internal Area
74 Sq M/795 Sq Ft



Ground Floor

First Floor

Please note that the location of doors, windows and other items are approximate and this floorplan is to be used for illustrative purposes only. Unauthorized reproduction is prohibited.



REGISTERED OFFICE 2-4 PACKHORSE ROAD, GERRARDS CROSS, BUCKINGHAMSHIRE, ENGLAND, SL9 7QE. COMPANY NO. 07557114. VAT NO. GB211239453