



HANOVER HOUSE, NW8 £3,500pw / £15,167pm UNFURNISHED

A capacious apartment set on the third floor of this prestigious portered building which benefits from a stunning westerly outlook over the St John's Wood Church Grounds and offers accommodation in excess of 2,700 sq ft. Hanover House can be found at the southern end of St John's Wood High Street and is within 650 metres of Regent's Park.

Principal Bedroom with En-Suite Bathroom and Dressing Room | Three Further Bedrooms | Bedroom Five/Study | Two Further Bathrooms (One En-Suite) | Shower Room | Utility Room | Kitchen/Breakfast Room | Double Reception Room | Passenger Lift | Portage

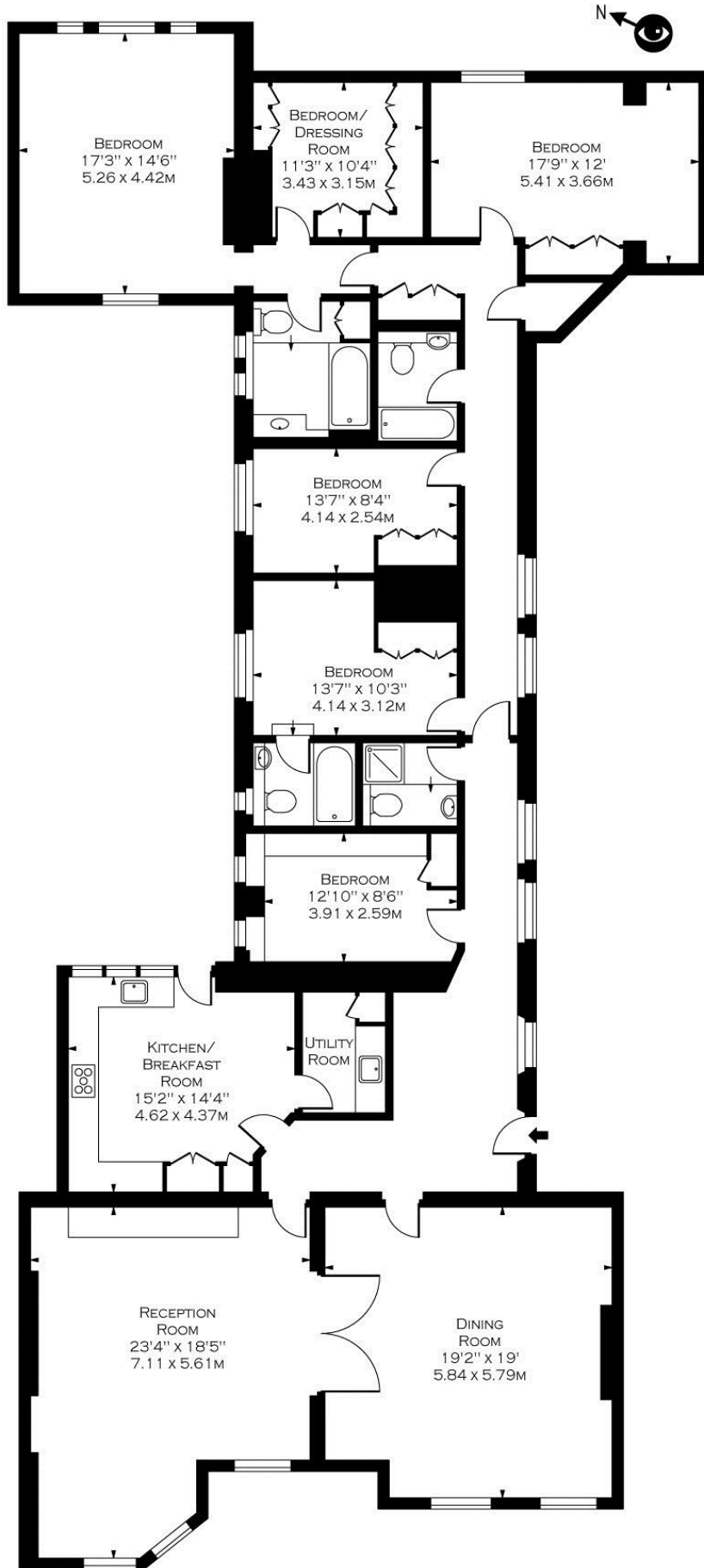
winkworth.co.uk/st-johns-wood

Winkworth

For every step...



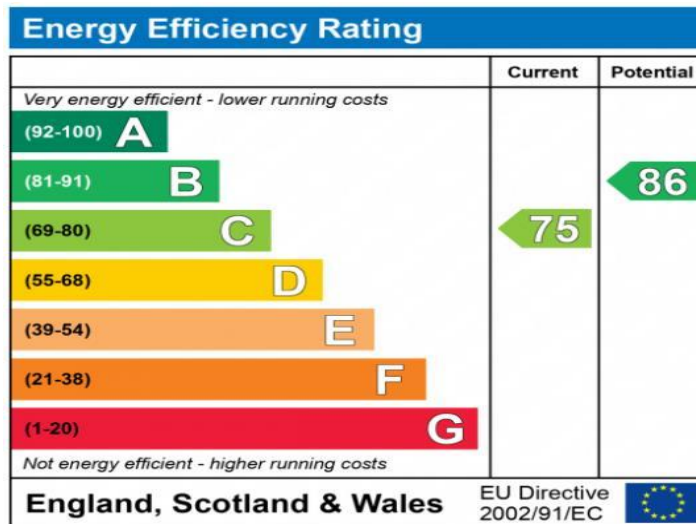
ST. JOHN'S WOOD HIGH STREET, NW8



THIRD FLOOR

APPROX GROSS INTERNAL AREA 2718 Sq Ft - 252.50 Sq M

FOR ILLUSTRATION PURPOSES ONLY - NOT TO SCALE
FLOOR PLAN BY WWW.BPMEDIAGROUP.COM
REF: No. P52119



The energy efficiency rating is a measure of the overall efficiency of a home. The higher the rating the more energy efficient the home is and the lower the fuel bills will be.

NB: These particulars are not an offer or contract, nor part of one. You should not rely on statements by Winkworth in the particulars or by word of mouth or in writing "information" as being factually accurate about the property, its condition or its value. Neither Winkworth nor any joint agent has any authority to make any representations about the property, and accordingly any information given is entirely without responsibility on the part of the agents, seller(s) or lessor(s). These particulars are prepared on the basis of the information supplied by our client and are a rough guide for information only. The photographs show only certain parts of the property. We are not able to check all of the information and therefore are unable to guarantee accuracy. All interested parties are therefore advised to undertake all necessary inspections and checks that they deem appropriate. Where displayed, the square footage is taken from the floor plans, which are created by an independent supplier. These measurements are approximate and included for illustrative purposes only. The measurements may vary. Winkworth does not make any representation as to the accuracy of these measurements and you should seek to verify them for yourself. Winkworth accept no liability for any loss you may suffer if you rely on these measurements. All fixtures and fittings, whether fitted or not are deemed removable by the vendor unless stated. Any reference to alterations to, or use of, any part of the property does not mean that any necessary planning, building regulations or other consent has been obtained. Amenities and appliances have not been tested.

St John's Wood | 103-104 St John's Wood Terrace, London NW8 6PL
020 7586 7001 | stjohnswood@winkworth.co.uk

