



Englefield Green, Surrey

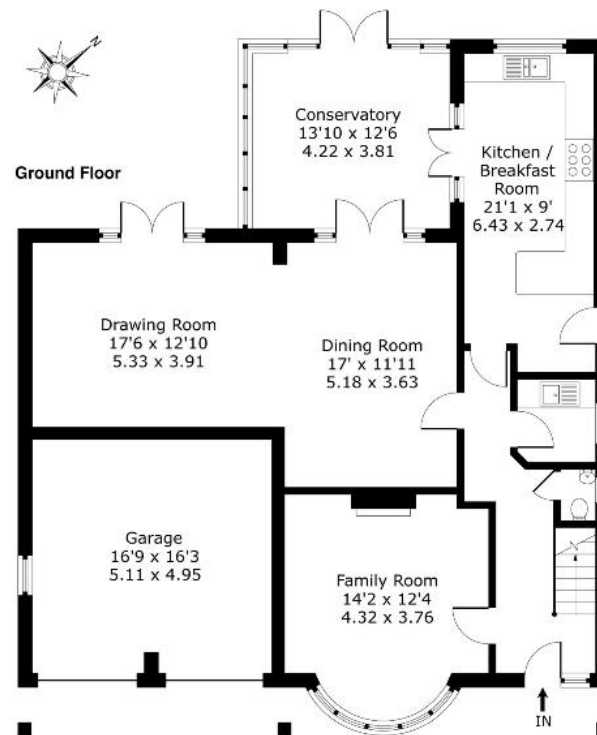
£3,500 Per calendar month

BUCKINGHAMS



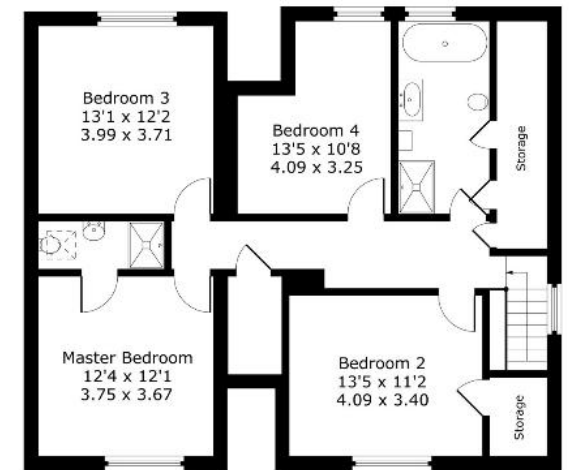
A handsome four bedroom detached house situated in a secluded cul de sac in Englefield Green. Excellent access to ACS Egham and Egham train station. Double garage and a large, pretty rear garden. Unfurnished. Council Tax Band F. EPC:E47.

Fees for tenants: Holding fee equivalent to one weeks rent, amendments to Tenancy Agreement after the document has been signed £50, change of sharer £50, stamp duty land tax (if total rent exceeds £125,000), 3% above the base rate of Bank of England per annum (calculated daily) for late/unpaid/returned rent payments, lost/damaged/broken keys/fobs or security devices at cost, deposit of five weeks rent if annual rent is less than £50,000 or six weeks rent if annual rent is £50,000 or more, all including VAT.



Approximate Gross Internal Floor Area :
 Ground Floor 140 sq m / 1508 sq ft
 First Floor 94 sq m / 1010 sq ft
Total 234 sq m / 2518 sq ft

First Floor



6 Station Approach Virginia Water Surrey GU25 4DL
 01344 845050
www.buckinghamams.com
lettings@buckinghamams.com



BUCKINGHAMMS