



Websters
estate agents

Warwick Road, Twickenham, TW2 6SW

Mid Terrace Victorian 2 double bedroom family home in a popular, residential cul-de-sac location. Situated just 0.3 miles from Twickenham Green, local shops, bars and restaurants, 0.5 miles from Twickenham town centre and just 0.7 miles from Strawberry Hill and Twickenham mainline station.

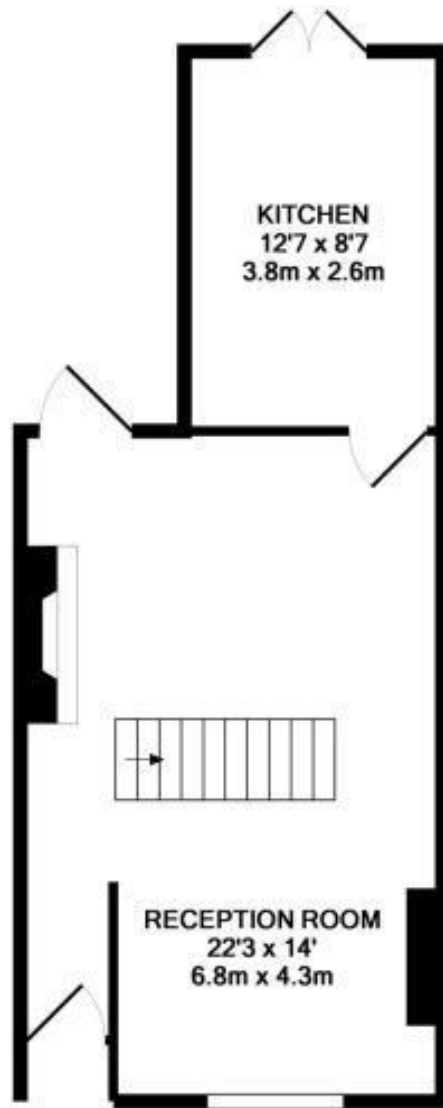
Immaculately presented to offer 782 sq ft of spacious and well proportioned living space over 2 floors with high specification fixtures, fittings and floorings, double glazed windows with plantation style shutters, charming period features and neutral decor throughout.

Front door leads into the lobby area with access to the open plan dual aspect living room with a seating area at the front and space for dining at the rear with a door to the garden and access to the stylish fitted kitchen. Double doors open onto the paved rear garden with planting and secure gated rear access. On the first floor are 2 double bedrooms, the family bathroom and hatch access to loft storage.

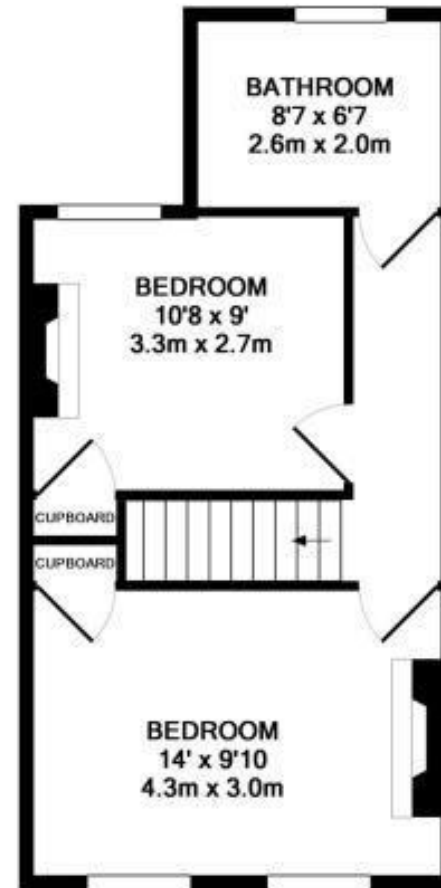
Located within 0.4 miles of Archdeacon, TPA and St Richard Reynolds, 0.6 miles from Trafalgar and 0.9 miles from Waldegrave Girls School/Co-ed Sixth Form.
EPC Rating E

- Mid Terrace Victorian Home
- 2 Double Bedrooms and Upstairs Bathroom
- 782 Sq Ft of Living Space over 2 Floors
- Low Maintenance Garden with Rear Access
- Immaculately Presented Throughout
- 0.3 Miles from Twickenham Green
- 0.7 Miles from Twickenham Train Station





GROUND FLOOR
APPROX. FLOOR
AREA 414 SQ.FT.
(38.5 SQ.M.)



1ST FLOOR
APPROX. FLOOR
AREA 368 SQ.FT.
(34.2 SQ.M.)

TOTAL APPROX. FLOOR AREA 782 SQ.FT. (72.6 SQ.M.)

Made with Metropix ©2014

a Websters Estate Agents 36 Broad Street, Teddington, Middlesex TW11 8QY t 020 8614 6000 e sales@mywebsters.co.uk w mywebsters.co.uk

Disclaimer

These particulars, whilst believed to be accurate are set out as a general outline only for guidance and do not constitute any part of an offer or contract. Intending purchasers should not rely on them as statements of representation of fact, but must satisfy themselves by inspection or otherwise as to their accuracy. We have not carried out a detailed survey nor tested the services, appliances and specific fittings. Room sizes should not be relied upon for carpets and furnishings. The measurements given are approximate. No person in this firm's employment has the authority to make or give any representation or warranty in respect of the property.

