



## WILLIAM COURT, NW8 £923pw / £4,000pm FURNISHED

A contemporary two-bedroom, two-bathroom, third floor apartment presented in beautiful decorative order throughout. William Court is a well-maintained building and offers 24 hour portorage, and the use of a lovely communal decked garden. This popular block is located within 500 metres of the shops and restaurants of St John's Wood High Street.

Two Bedrooms | Two Bathrooms | 24 Hour Porter | Communal Gardens

**Winkworth**

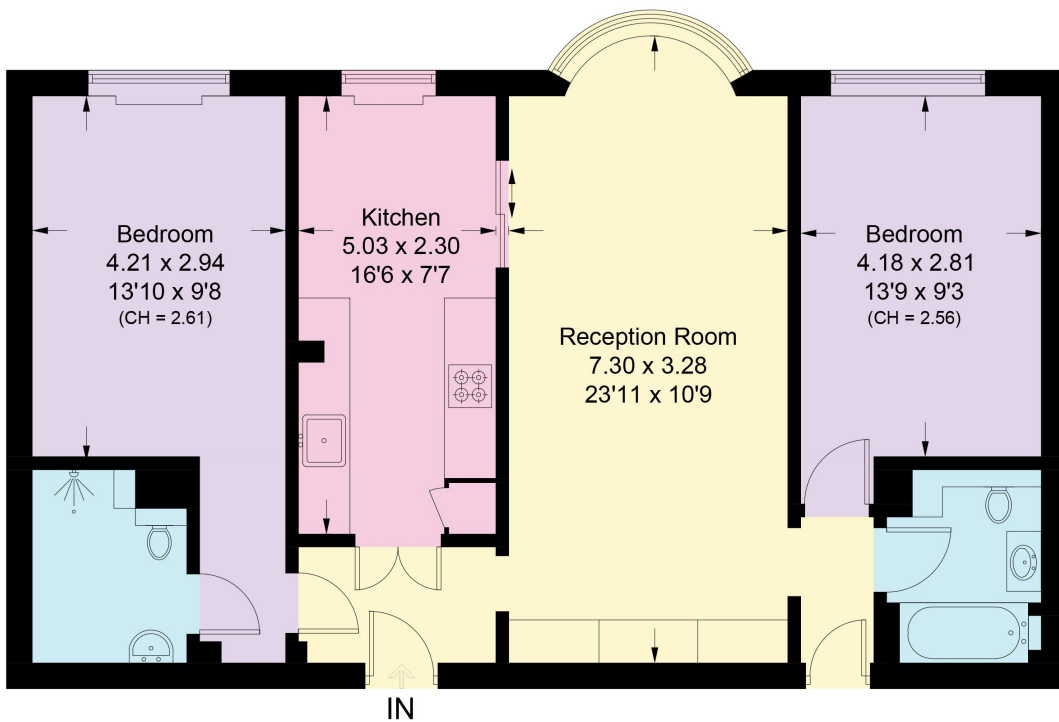
[winkworth.co.uk/st-johns-wood](http://winkworth.co.uk/st-johns-wood)

For every step...



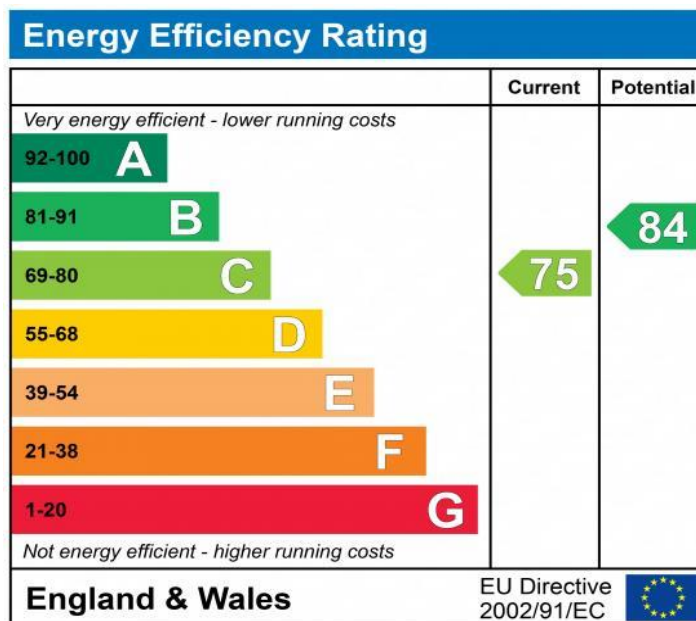
## William Court, NW8

Approximate Area = 80.3 sq m / 864 sq ft  
Including Limited Use Area (1.7 sq m / 18 sq ft)



Approximate Area = 80.3 sq m / 864 sq ft  
Including Limited Use Area (1.7 sq m / 18 sq ft)

Surveyed and drawn in accordance with the International property measurements standards (IPMS 2: Residential) Not drawn to scale unless stated.  
Whilst every care is taken in the preparation of this plan, please check all dimensions, shapes and compass bearings before making any decisions reliant upon them.



NB: These particulars are not an offer or contract, nor part of one. You should not rely on statements by Winkworth in the particulars or by word of mouth or in writing "information" as being factually accurate about the property, its condition or its value. Neither Winkworth nor any joint agent has any authority to make any representations about the property, and accordingly any information given is entirely without responsibility on the part of the agents, seller(s) or lessor(s). These particulars are prepared on the basis of the information supplied by our client and are a rough guide for information only. The photographs show only certain parts of the property. We are not able to check all of the information and therefore are unable to guarantee accuracy. All interested parties are therefore advised to undertake all necessary inspections and checks that they deem appropriate. Where displayed, the square footage is taken from the floor plans, which are created by an independent supplier. These measurements are approximate and included for illustrative purposes only. The measurements may vary. Winkworth does not make any representation as to the accuracy of these measurements and you should seek to verify them for yourself. Winkworth accept no liability for any loss you may suffer if you rely on these measurements. All fixtures and fittings, whether fitted or not are deemed removable by the vendor unless stated. Any reference to alterations to, or use of, any part of the property does not mean that any necessary planning, building regulations or other consent has been obtained. Amenities and appliances have not been tested.

St John's Wood | 103-104 St John's Wood Terrace, London NW8 6PL  
020 7586 7001 | [stjohnswood@winkworth.co.uk](mailto:stjohnswood@winkworth.co.uk)

