



MEADOWBANK, LONDON NW3 3AY £1,800pw / £7,800pm UNFURNISHED

A stylish town house which provides versatile family accommodation. The house which is set in a private road in the heart of Primrose Hill moments from the village and the renowned park being one of London's most iconic green spaces. Further benefits include off street parking and private garden leading to a communal garden.

Five Bedrooms Two With En Suite Shower Rooms | Family Bathroom | Guest WC | Two Reception Rooms | Kitchen | Utility Area | Garden | Communal Garden | Off Street Parking

VIRTUAL TOUR: <https://nichecom.s3.eu-west-1.amazonaws.com/2022/winkworth.co.uk/st-johns-wood>

Winkworth

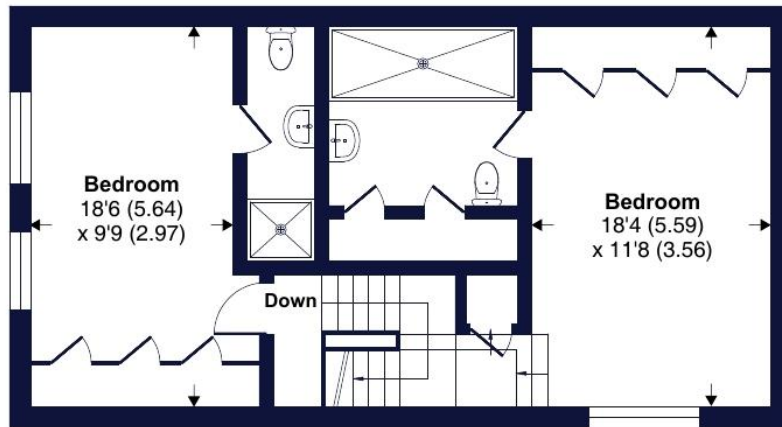
For every step...



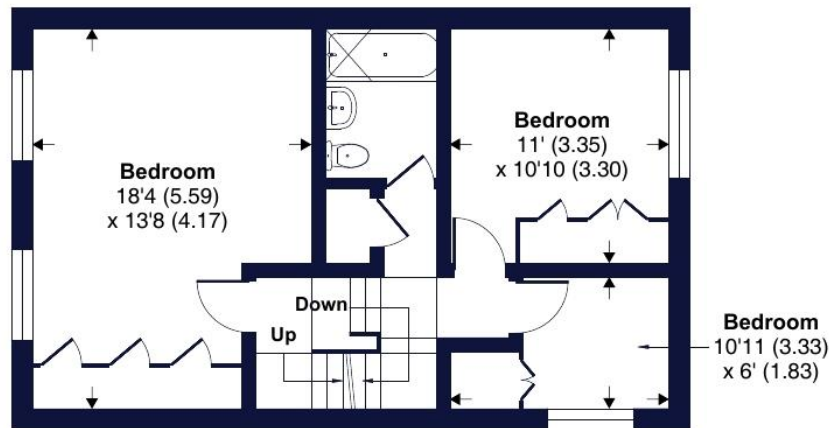
Meadowbank, London, NW3

Approximate Area = 1981 sq ft / 184 sq m

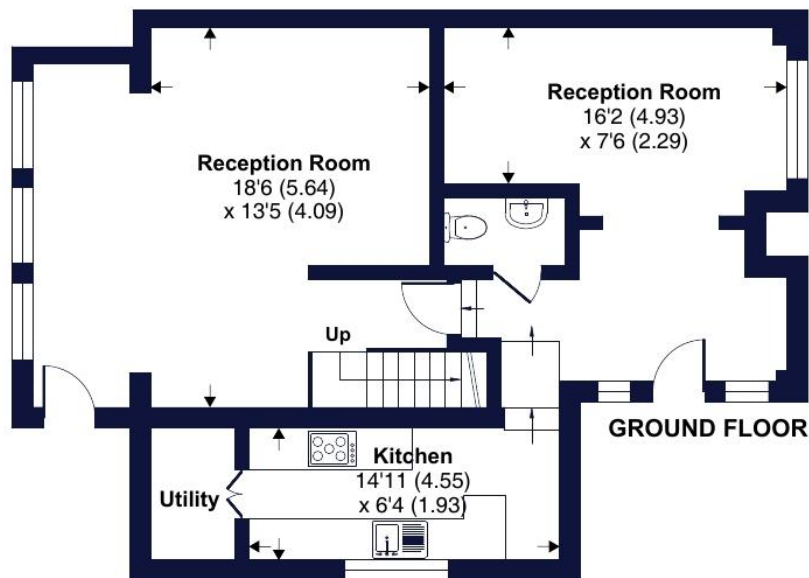
For identification only - Not to scale



SECOND FLOOR



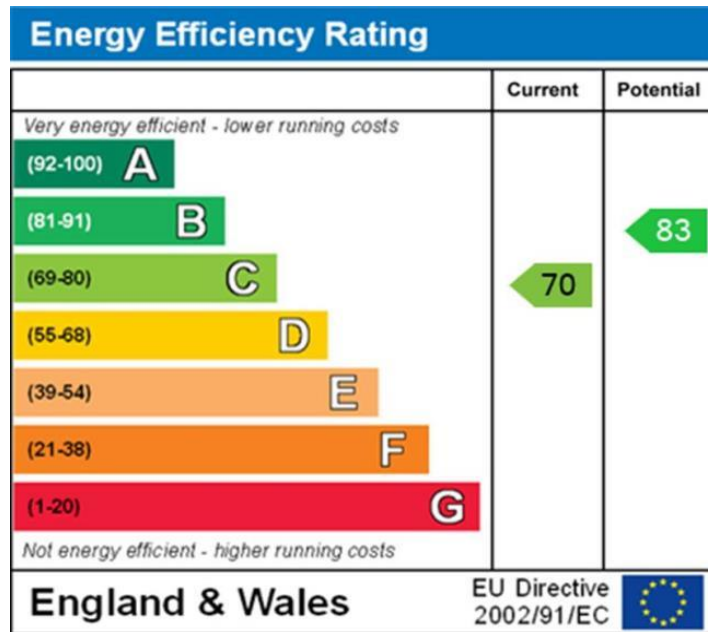
FIRST FLOOR



GROUND FLOOR

This floor plan should be used as a general outline for guidance only. Any intending purchaser or lessee should satisfy themselves by inspection searches, enquiries, and full survey as to the correctness of each statement. Any areas, measurements or distances quoted are approximate and should not be used to value a property or be the basis of any sale or let. Floor plan produced in accordance with RICS Property Measurement Standards incorporating International Property Measurement Standards (IPMS2 Residential). © nichecom 2022. Produced for Winkworth. REF: 870847





NB: These particulars are not an offer or contract, nor part of one. You should not rely on statements by Winkworth in the particulars or by word of mouth or in writing "information" as being factually accurate about the property, its condition or its value. Neither Winkworth nor any joint agent has any authority to make any representations about the property, and accordingly any information given is entirely without responsibility on the part of the agents, seller(s) or lessor(s). These particulars are prepared on the basis of the information supplied by our client and are a rough guide for information only. The photographs show only certain parts of the property. We are not able to check all of the information and therefore are unable to guarantee accuracy. All interested parties are therefore advised to undertake all necessary inspections and checks that they deem appropriate. Where displayed, the square footage is taken from the floor plans, which are created by an independent supplier. These measurements are approximate and included for illustrative purposes only. The measurements may vary. Winkworth does not make any representation as to the accuracy of these measurements and you should seek to verify them for yourself. Winkworth accept no liability for any loss you may suffer if you rely on these measurements. All fixtures and fittings, whether fitted or not are deemed removable by the vendor unless stated. Any reference to alterations to, or use of, any part of the property does not mean that any necessary planning, building regulations or other consent has been obtained. Amenities and appliances have not been tested.

St John's Wood | 103-104 St John's Wood Terrace, London NW8 6PL
020 7586 7001 | stjohnswood@winkworth.co.uk