



Virginia Water, Surrey

£6,750 Per calendar month

BUCKINGHAMS

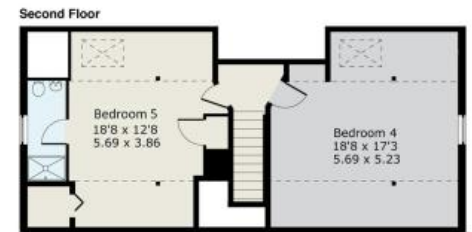


A beautifully presented family home offering a tasteful blend of character and modern features whilst providing versatile and spacious living accommodation across three floors. Excellent access to Virginia Water's two shopping parades and train station and ACS Egham (2.9 miles) and TISIS (2.7 miles). Driveway with

Fees for tenants: Holding fee equivalent to one weeks rent, amendments to Tenancy Agreement after the document has been signed £50, change of sharer £50, stamp duty land tax (if total rent exceeds £125,000), 3% above the base rate of Bank of England per annum (calculated daily) for late/unpaid/returned rent payments, lost/damaged/broken keys/fobs or security devices at cost, deposit of five weeks rent if annual rent is less than £50,000 or six weeks rent if annual rent is £50,000 or more, all including VAT.

Thatched Cottage, Knowle Hill, Virginia Water

Approximate Gross Internal Floor Area :	
Ground Floor	206 sq m / 2217 sq ft
First Floor	147 sq m / 1582 sq ft
Second Floor	70 sq m / 753 sq ft
Total	423 sq m / 4552 sq ft



Ref: TCB010205142 Buckingham
HPI ©2010 Tel: 07814007721 matt@hollandphotoimaging.com
Not to Scale. Any Areas, measurements or distances given are maximum and approximate only, no decisions without checking should be made when reliant upon them.

6 Station Approach Virginia Water Surrey GU25 4DL
01344 845050
www.buckingham.com
lettings@buckingham.com



BUCKINGHAM