



STUART TOWER, W9 £530pw / £2,297pm FURNISHED

Set within the popular Stuart Tower, located on the corner of Sutherland Avenue and Maida Vale, Winkworth Little Venice is excited to offer this one bedroom south westerly facing apartment situated on the fourteenth floor of this purpose built block. This well proportioned apartment comprises a contemporary kitchen, large reception room with floor-to-ceiling windows and a south-west oriented balcony. Leading off the reception room is the spacious bedroom and modern bathroom. Stuart Tower's apartments are well-liked for their ample storage, 24-hour portorage, passenger lifts, and lobby. Stuart Tower is positioned just 0.35 miles from Warwick Avenue Underground Station (Bakerloo line) and 0.2 miles from the shops and restaurants on Clifton Road.

Bedroom | Bathroom | Reception Room | Kitchen | Balcony | 24-Hour Portorage | Passenger Lifts

winkworth.co.uk/maida-vale

Winkworth

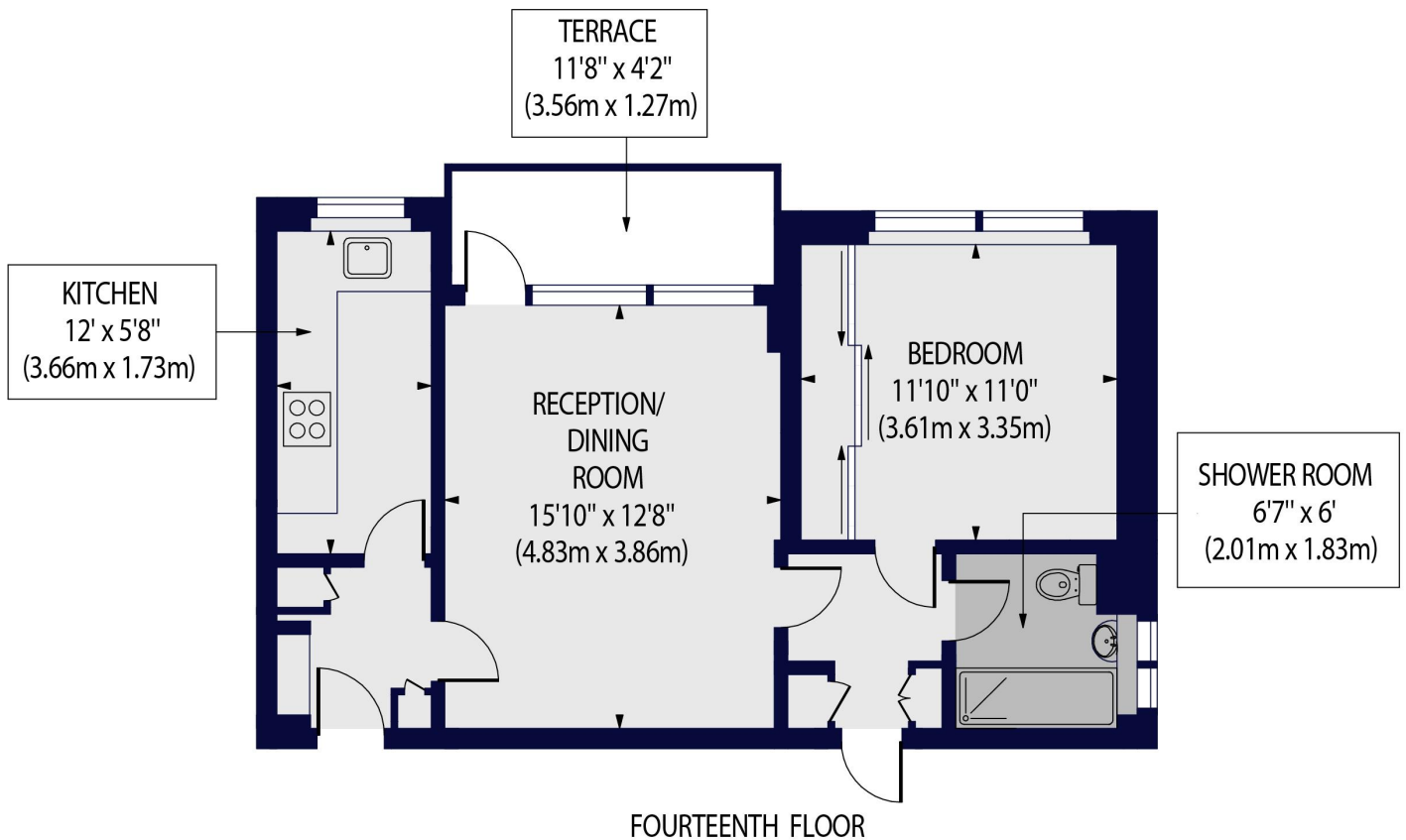
incorporating

Vickers



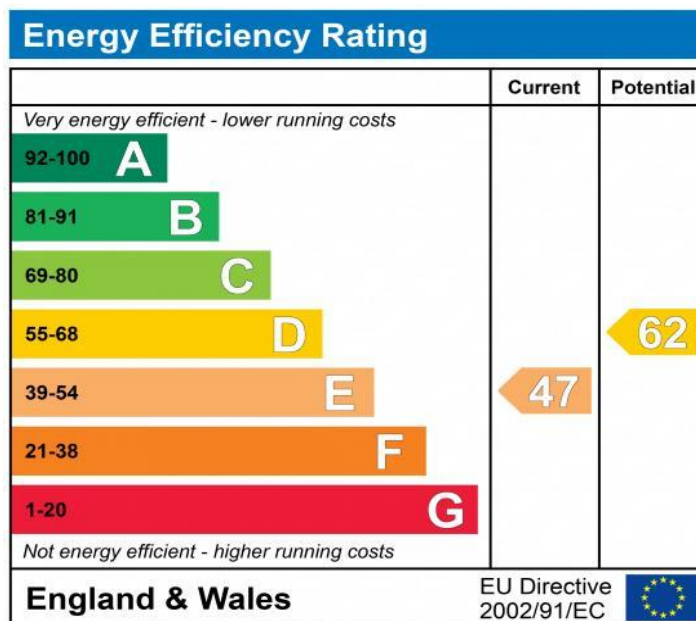
STUART TOWER, MAIDA VALE, LONDON, W9 1UD

Approx. Gross Internal Floor Area 540 sq ft. / 50 sq.m



For Illustration Purposes Only - Not To Scale Floor Plan by www.nogaphotostudio.com Ref: No.47574
This floor plan should be used as a general outline for guidance only. Any intending purchaser or lessee should satisfy themselves by inspection, searches, enquiries and full survey as to the correctness of each statement. Any areas, measurements or distances quoted are approximate and should not be used to value a property or be the basis of any sale or let.





NB: These particulars are not an offer or contract, nor part of one. You should not rely on statements by Winkworth in the particulars or by word of mouth or in writing "information" as being factually accurate about the property, its condition or its value. Neither Winkworth nor any joint agent has any authority to make any representations about the property, and accordingly any information given is entirely without responsibility on the part of the agents, seller(s) or lessor(s). These particulars are prepared on the basis of the information supplied by our client and are a rough guide for information only. The photographs show only certain parts of the property. We are not able to check all of the information and therefore are unable to guarantee accuracy. All interested parties are therefore advised to undertake all necessary inspections and checks that they deem appropriate. Where displayed, the square footage is taken from the floor plans, which are created by an independent supplier. These measurements are approximate and included for illustrative purposes only. The measurements may vary. Winkworth does not make any representation as to the accuracy of these measurements and you should seek to verify them for yourself. Winkworth accept no liability for any loss you may suffer if you rely on these measurements. All fixtures and fittings, whether fitted or not are deemed removable by the vendor unless stated. Any reference to alterations to, or use of, any part of the property does not mean that any necessary planning, building regulations or other consent has been obtained. Amenities and appliances have not been tested.

Maida Vale | 211-213 Sutherland Avenue, Little Venice, London W9 1RU
020 7289 1692 | maidavale@winkworth.co.uk

winkworth.co.uk/maida-vale



incorporating
Vickers



Proprietors: FINEBASE W9 Limited trading as Winkworth
Registered office: 103-104 St John's Wood Terrace, London NW8 6PL
Registered in England No 12007773