



BLLENHEIM ROAD, NW8 £5,750pw / £24,917pm FURNISHED OR UNFURNISHED

A semi detached double fronted period house with accommodation in excess of 4624 sq feet (428 sq m) that has undergone a painstaking and exacting four year refurbishment program that has delivered a stunning family home where period features meet urban and contemporary design. Our Client has spared no expense in ensuring the use of the finest of materials and technology, a bespoke kitchen is fitted with an array of Gaggenau appliances, air conditioning throughout, a Lutron lightings system and a clean air filtration system. A wonderful fully automated cinema room provides the perfect setting for family movies and sports, whilst a south facing patio and AstroTurf area provides a delightful al fresco spot.

Detached House | Over 4600sqft | Cinema Room | Utility Room | Plant Room | Boot Room | Laundry Chute | Air Conditioning | Lutron Lighting | Surround Sound System | South Facing Garden | Bespoke Office | Security System

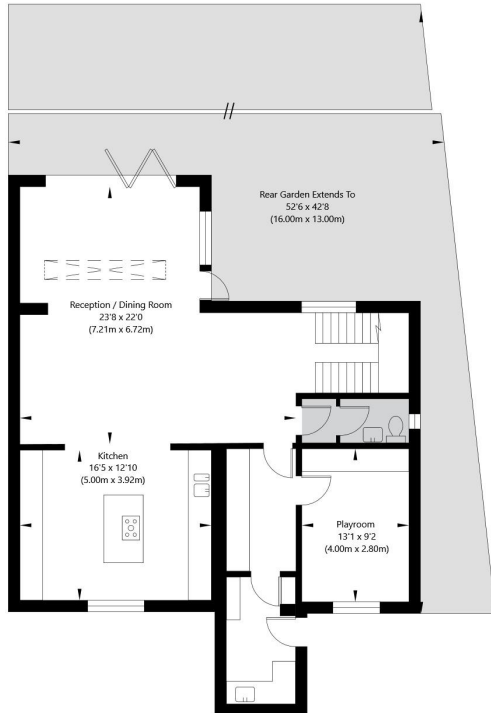
VIRTUAL TOUR: <https://youtu.be/oiHVK5dYAM>
[winkworth.co.uk/st-johns-wood](https://www.winkworth.co.uk/st-johns-wood)

Winkworth

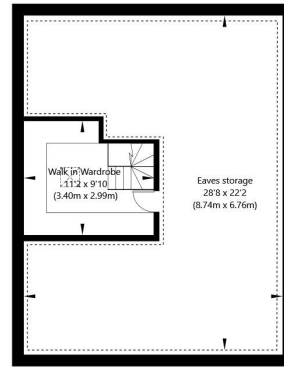
For every step...



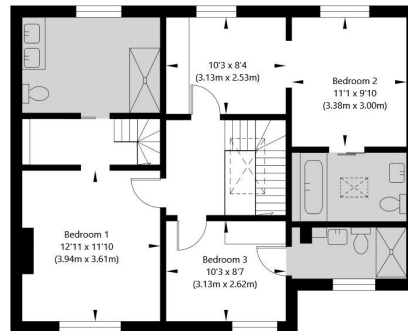
Blenheim Road, London NW8 0LU



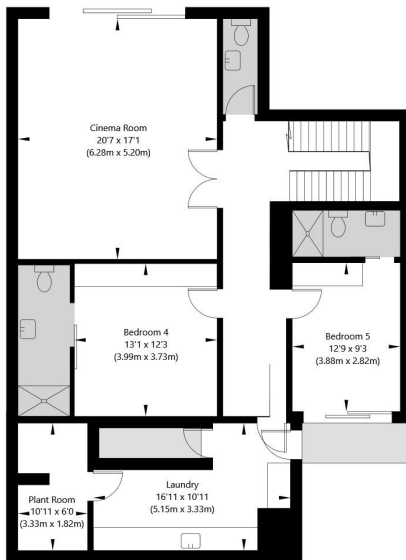
Lower Ground Floor
GROSS INTERNAL FLOOR AREA
APPROX. 96.78 SQ M / 1042 SQ FT



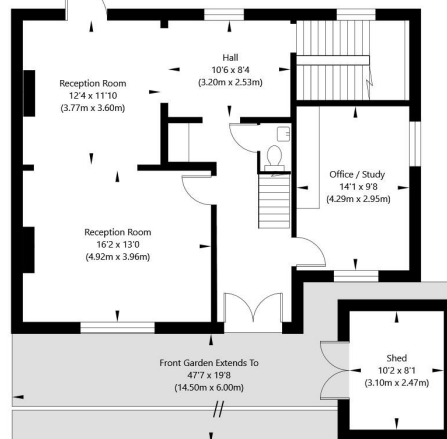
Loft
GROSS INTERNAL FLOOR AREA
APPROX. 59.89 SQ M / 645 SQ FT



First Floor
GROSS INTERNAL FLOOR AREA
APPROX. 76.22 SQ M / 820 SQ FT



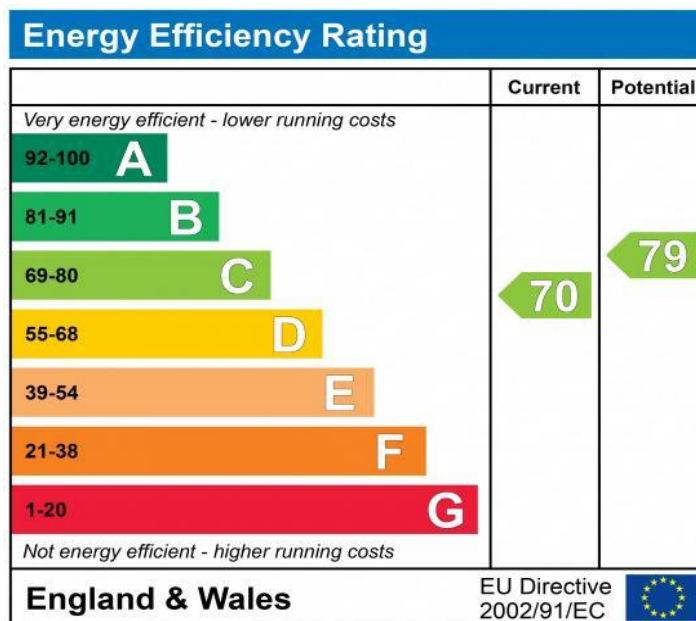
Basement
GROSS INTERNAL FLOOR AREA
APPROX. 113.65 SQ M / 1223 SQ FT



Raised Ground Floor
GROSS INTERNAL FLOOR AREA
APPROX. 75.39 SQ M / 812 SQ FT

APPROXIMATE GROSS INTERNAL FLOOR AREA 429.59 SQ M / 4624 SQ FT
APPROXIMATE GROSS INTERNAL FLOOR AREA EXCLUDING RESTRICTED HEIGHT 382.12 SQ M / 4113 SQ FT

THIS FLOOR PLAN IS FOR ILLUSTRATIVE PURPOSES ONLY AND SHOULD BE USED FOR THIS PURPOSE BY PROSPECTIVE APPLICANTS AS ITS NOT TO SCALE.



NB: These particulars are not an offer or contract, nor part of one. You should not rely on statements by Winkworth in the particulars or by word of mouth or in writing "information" as being factually accurate about the property, its condition or its value. Neither Winkworth nor any joint agent has any authority to make any representations about the property, and accordingly any information given is entirely without responsibility on the part of the agents, seller(s) or lessor(s). These particulars are prepared on the basis of the information supplied by our client and are a rough guide for information only. The photographs show only certain parts of the property. We are not able to check all of the information and therefore are unable to guarantee accuracy. All interested parties are therefore advised to undertake all necessary inspections and checks that they deem appropriate. Where displayed, the square footage is taken from the floor plans, which are created by an independent supplier. These measurements are approximate and included for illustrative purposes only. The measurements may vary. Winkworth does not make any representation as to the accuracy of these measurements and you should seek to verify them for yourself. Winkworth accept no liability for any loss you may suffer if you rely on these measurements. All fixtures and fittings, whether fitted or not are deemed removable by the vendor unless stated. Any reference to alterations to, or use of, any part of the property does not mean that any necessary planning, building regulations or other consent has been obtained. Amenities and appliances have not been tested.

St John's Wood | 103-104 St John's Wood Terrace, London NW8 6PL
020 7586 7001 | stjohnswood@winkworth.co.uk

